

PMF1 Rabbit mAb [QYT7]

Cat NO. :A11265

Information:

Applications	Reactivity:	UniProt ID:	MW(kDa)	Host	Isotype	Size
WB IP	Human,Mouse,R at	Q6P1K2	25kDa	Rabbit	IgG	50ul,100ul,200ul

Applications detail:

Application	Dilution
WB	1:1000-2000
The optimal dilutions should be determined by the end user	

Conjugate:

UnConjugate

Form:

Liquid

sensitivity:

Endogenous

Purification:

Affinity-chromatography

Specificity:

Antibody is produced by immunizing animals with A synthesized peptide derived from human PMF1

Storage buffer and conditions:

Antibody store in 10 mM PBS, 0.5mg/ml BSA, 50% glycerol (buffer) .

Shipped at 4°C. Store at-20°C or -80°C.

Products are valid for one natural year of receipt.Avoid repeated freeze / thaw cycles.

Tissue specificity:

Highest levels of expression in heart and skeletal muscle, with significant levels expressed in kidney and liver..

Subcellular location:

Nucleus. Chromosome, centromere, kinetochore.

Function:

Introduction: **WB:** Western Blot **IP:** Immunoprecipitation **IHC:** Immunohistochemistry **ChIP:** Chromatin Immunoprecipitation **ICC/IF:** Immunocytochemistry/Immunofluorescence **F:** Flow Cytometry

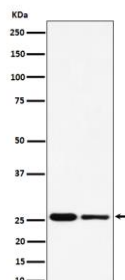
Cross Reactivity: **H:** human **M:** mouse **R:** rat **Hm:** hamster **Mk:** monkey **Vr:** virus **Ml:** mink **C:** chicken **Dm** D. melanogaster **X:** Xenopus **Z:** zebrafish **B:** bovine
Dg: dog **Pg:** pig **Hr:** horse

For Research Use Only. Not For Use In Diagnostic Procedures.

Part of the MIS12 complex which is required for normal chromosome alignment and segregation and kinetochore formation during mitosis. May act as a cotranscription partner of NFE2L2 involved in regulation of polyamine-induced transcription of SSAT..

Validation Data:

PMF1 Rabbit mAb [QYT7] Images



Western blot (SDS PAGE) analysis of extracts from (1) HeLa cell lysate; (2) RAW 264.7 cell lysate. Using PMF1 Rabbit mAb [QYT7] at dilution of 1:1000 incubated at 4°C over night.

View more information on <http://naturebios.com>

IMPORTANT: For western blots, incubate membrane with diluted primary antibody in 1% w/v Milk, 1X TBST at 4°C overnight.