

VE Cadherin Rabbit mAb [tGg8]

Cat NO. :A11386

Information:

Applications	Reactivity:	UniProt ID:	MW(kDa)	Host	Isotype	Size
WB ICC/IF IP	Mouse	P55284(mouse)	90,125kDa	Rabbit	IgG	50ul,100ul,200ul

Applications detail:

Application	Dilution
WB	1:1000-2000
ICC/IF	1:100
The optimal dilutions should be determined by the end user	

Conjugate:

UnConjugate

Form:

Liquid

sensitivity:

Endogenous

Purification:

Affinity-chromatography

Specificity:

Antibody is produced by immunizing animals with A synthesized peptide derived from mouse VE Cadherin

Storage buffer and conditions:

Antibody store in 10 mM PBS, 0.5mg/ml BSA, 50% glycerol (buffer) .

Shipped at 4°C. Store at -20°C or -80°C.

Products are valid for one natural year of receipt.Avoid repeated freeze / thaw cycles.

Tissue specificity:

Expressed in postnatal endothelial cells of the retinal vascular plexus (at protein level)..

Subcellular location:

Cell junction. Cell membrane,Single-pass type I membrane protein.

Function:

Cadherins are calcium-dependent cell adhesion proteins (By similarity). They preferentially interact with themselves in a homophilic manner in connecting cells,cadherins may thus contribute to the sorting of heterogeneous cell types (By similarity). This cadherin may play an important role in endothelial cell biology through control of the cohesion and organization of the intercellular junctions (PubMed:9220534, PubMed:20332120). It associates with alpha-catenin forming a link to the cytoskeleton (By similarity). Acts in concert with KRIT1 and PALS1 to establish and maintain correct endothelial cell polarity and vascular lumen (PubMed:27466317). These effects are mediated by recruitment and activation of the Par polarity complex and

Introduction: **WB:** Western Blot **IP:** Immunoprecipitation **IHC:** Immunohistochemistry **ChIP:** Chromatin Immunoprecipitation **ICC/IF:** Immunocytochemistry/Immunofluorescence **F:** Flow Cytometry

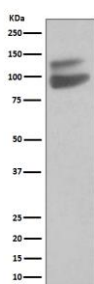
Cross Reactivity: **H:** human **M:** mouse **R:** rat **Hm:** hamster **Mk:** monkey **Vr:** virus **Ml:** mink **C:** chicken **Dm** D. melanogaster **X:** Xenopus **Z:** zebrafish **B:** bovine **Dg:** dog **Pg:** pig **Hr:** horse

For Research Use Only. Not For Use In Diagnostic Procedures.

RAP1B (By similarity). Required for activation of PRKCZ and for localization of phosphorylated PRKCZ, PARD3, TIAM1 and RAP1B to the cell junction (By similarity)..

Validation Data:

VE Cadherin Rabbit mAb [tGg8] Images



Western blot (SDS PAGE) analysis of extracts from Mouse lung lysate.Using VE Cadherin Rabbit mAb [tGg8]at dilution of 1:1000 incubated at 4℃ over night.

View more information on <http://naturebios.com>

IMPORTANT: For western blots, incubate membrane with diluted primary antibody in 1% w/v Milk, 1X TBST at 4°C overnight.