

ERCC8 Rabbit mAb [Wxf8]

Cat NO. :A11741

Information:

Applications	Reactivity:	UniProt ID:	MW(kDa)	Host	Isotype	Size
WB IP	Human	Q13216	44kDa	Rabbit	IgG	50ul,100ul,200ul

Applications detail:

Application	Dilution
WB	1:1000-2000
The optimal dilutions should be determined by the end user	

Conjugate:

UnConjugate

Form:

Liquid

sensitivity:

Endogenous

Purification:

Affinity-chromatography

Specificity:

Antibody is produced by immunizing animals with A synthesized peptide derived from human ERCC8

Storage buffer and conditions:

Antibody store in 10 mM PBS, 0.5mg/ml BSA, 50% glycerol (buffer) .

Shipped at 4°C. Store at-20°C or -80°C.

Products are valid for one natural year of receipt.Avoid repeated freeze / thaw cycles.

Tissue specificity:

Subcellular location:

Nucleus. Nucleus matrix.

Function:

Substrate-recognition component of the CSA complex, a DCX (DDB1-CUL4-X-box) E3 ubiquitin-protein ligase complex, involved in transcription-coupled nucleotide excision repair. The CSA complex (DCX(ERCC8) complex) promotes the ubiquitination and subsequent proteasomal degradation of ERCC6 in a UV-dependent manner,ERCC6 degradation is essential for the recovery of RNA synthesis after transcription-coupled repair. It is required for the recruitment of XAB2, HMGN1 and TCEA1/TFIIS to a transcription-coupled repair complex which removes RNA polymerase II-blocking lesions from the transcribed strand of active genes. Plays a role in DNA

Introduction: **WB:** Western Blot **IP:** Immunoprecipitation **IHC:** Immunohistochemistry **ChIP:** Chromatin Immunoprecipitation **ICC/IF:** Immunocytochemistry/Immunofluorescence **F:** Flow Cytometry

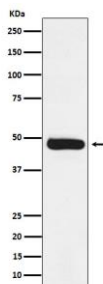
Cross Reactivity: **H:** human **M:** mouse **R:** rat **Hm:** hamster **Mk:** monkey **Vir:** virus **Mi:** mink **C:** chicken **Dm** D. melanogaster **X:** Xenopus **Z:** zebrafish **B:** bovine **Dg:** dog **Pg:** pig **Hr:** horse

For Research Use Only. Not For Use In Diagnostic Procedures.

single-strand and double-strand breaks (DSSBs) repair,involved in repair of DSSBs by non-homologous end joining (NHEJ) (PubMed:29545921)..

Validation Data:

ERCC8 Rabbit mAb [Wxf8] Images



Western blot (SDS PAGE) analysis of extracts from Molt4 cell lysate.Using ERCC8 Rabbit mAb [Wxf8]at dilution of 1:1000 incubated at 4°C over night.

View more information on <http://naturebios.com>

IMPORTANT: For western blots, incubate membrane with diluted primary antibody in 1% w/v Milk, 1X TBST at 4°C overnight.