

**BANF1 Rabbit mAb [tCN8]**

**Cat NO. :A14861**

**Information:**

| Applications     | Reactivity:         | UniProt ID: | MW(kDa) | Host   | Isotype | Size             |
|------------------|---------------------|-------------|---------|--------|---------|------------------|
| WB IHC ICC/IF FC | Human,Mouse,R<br>at | O75531      | 10kDa   | Rabbit | IgG     | 50ul,100ul,200ul |

**Applications detail:**

| Application                                                | Dilution    |
|------------------------------------------------------------|-------------|
| WB                                                         | 1:1000-2000 |
| IHC                                                        | 1:100       |
| ICC/IF                                                     | 1:100       |
| The optimal dilutions should be determined by the end user |             |

**Conjugate:**

UnConjugate

**Form:**

Liquid

**sensitivity:**

Endogenous

**Purification:**

Affinity-chromatography

**Specificity:**

Antibody is produced by immunizing animals with A synthesized peptide derived from human BANF1

**Storage buffer and conditions:**

Antibody store in 10 mM PBS, 0.5mg/ml BSA, 50% glycerol (buffer) .

Shipped at 4°C. Store at-20°C or -80°C.

Products are valid for one natural year of receipt.Avoid repeated freeze / thaw cycles.

**Tissue specificity:**

Widely expressed. Expressed in colon, brain, heart, kidney, liver, lung, ovary, pancreas, placenta, prostate, skeletal muscle, small intestine, spleen and testis. Not detected in thymus and

**Subcellular location:**

Nucleus. Chromosome. Nucleus envelope. Cytoplasm.

**Function:**

**Introduction:** **WB:** Western Blot **IP:** Immunoprecipitation **IHC:** Immunohistochemistry **ChIP:** Chromatin Immunoprecipitation **ICC/IF:** Immunocytochemistry/ Immunofluorescence **F:** Flow Cytometry

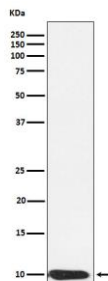
**Cross Reactivity:** **H:** human **M:** mouse **R:** rat **Hm:** hamster **Mk:** monkey **Vir:** virus **Ml:** mink **C:** chicken **Dm** D. melanogaster **X:** Xenopus **Z:** zebrafish **B:** bovine **Dg:** dog **Pg:** pig **Hr:** horse

**For Research Use Only. Not For Use In Diagnostic Procedures.**

Non-specific DNA-binding protein that plays key roles in mitotic nuclear reassembly, chromatin organization, DNA damage response, gene expression and intrinsic immunity against foreign DNA (PubMed:10908652, PubMed:11792822, PubMed:12163470, PubMed:18005698, PubMed:25991860, PubMed:28841419, PubMed:32792394). Contains two non-specific double-stranded DNA (dsDNA)-binding sites which promote DNA cross-bridging (PubMed:9465049). Plays a key role in nuclear membrane reformation at the end of mitosis by driving formation of a single nucleus in a spindle-independent manner (PubMed:28841419). Transiently cross-bridges anaphase chromosomes via its ability to bridge distant DNA sites, leading to the formation of a dense chromatin network at the chromosome ensemble surface that limits membranes to the surface (PubMed:28841419). Also acts as a negative regulator of innate immune activation by restricting CGAS activity toward self-DNA upon acute loss of nuclear membrane integrity (PubMed:32792394). Outcompetes CGAS for DNA-binding, thereby preventing CGAS activation and subsequent damaging autoinflammatory responses (PubMed:32792394). Involved in the recognition of exogenous dsDNA in the cytosol: associates with exogenous dsDNA immediately after its appearance in the cytosol at endosome breakdown and is required to avoid autophagy (PubMed:25991860). In case of poxvirus infection, has an antiviral activity by blocking viral DNA replication (PubMed:18005698).. (Microbial infection) Exploited by retroviruses for inhibiting self-destructing autointegration of retroviral DNA, thereby promoting integration of viral DNA into the host chromosome (PubMed:9465049, PubMed:11005805, PubMed:16680152). EMD and BAF are cooperative cofactors of HIV-1 infection (PubMed:16680152). Association of EMD with the viral DNA requires the presence of BAF and viral integrase (PubMed:16680152). The association of viral DNA with chromatin requires the presence of BAF and EMD (PubMed:16680152)..

## Validation Data:

### BANF1 Rabbit mAb [tCN8] Images



Western blot ( SDS PAGE ) analysis of extracts from HeLa cell lysate.Using BANF1 Rabbit mAb [tCN8]at dilution of 1:1000 incubated at 4°C over night.

View more information on <http://naturebios.com>

**IMPORTANT:** For western blots, incubate membrane with diluted primary antibody in 1% w/v Milk, 1X TBST at 4°C overnight.