

beta Defensin 1 Rabbit mAb [DVIq]

Cat NO. :A16227

Information:

Applications	Reactivity:	UniProt ID:	MW(kDa)	Host	Isotype	Size
WB	Human	P60022	7kDa	Rabbit	IgG	50ul,100ul,200ul

Applications detail:

Application	Dilution
WB	1:1000-2000
The optimal dilutions should be determined by the end user	

Conjugate:

UnConjugate

Form:

Liquid

sensitivity:

Endogenous

Purification:

Affinity-chromatography

Specificity:

Antibody is produced by immunizing animals with A synthesized peptide derived from human beta Defensin 1

Storage buffer and conditions:

Antibody store in 10 mM PBS, 0.5mg/ml BSA, 50% glycerol (buffer) .

Shipped at 4°C. Store at-20°C or -80°C.

Products are valid for one natural year of receipt.Avoid repeated freeze / thaw cycles.

Tissue specificity:

Blood plasma. Sperm. Highly expressed in the lower head and midpiece of sperm. Significantly reduced levels found in the sperms of asthenozoospermia and leukocytospermia patients (at protein level)..

Subcellular location:

Secreted. Membrane.

Function:

Introduction: **WB:** Western Blot **IP:** Immunoprecipitation **IHC:** Immunohistochemistry **ChIP:** Chromatin Immunoprecipitation **ICC/IF:** Immunocytochemistry/Immunofluorescence **F:** Flow Cytometry

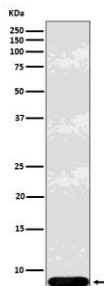
Cross Reactivity: **H:** human **M:** mouse **R:** rat **Hm:** hamster **Mk:** monkey **Vr:** virus **Ml:** mink **C:** chicken **Dm** D. melanogaster **X:** Xenopus **Z:** zebrafish **B:** bovine **Dg:** dog **Pg:** pig **Hr:** horse

For Research Use Only. Not For Use In Diagnostic Procedures.

Has bactericidal activity. May act as a ligand for C-C chemokine receptor CCR6. Positively regulates the sperm motility and bactericidal activity in a CCR6-dependent manner. Binds to CCR6 and triggers Ca²⁺ mobilization in the sperm which is important for its motility (PubMed:25122636)..

Validation Data:

beta Defensin 1 Rabbit mAb [DVIq] Images



Western blot (SDS PAGE) analysis of extracts from Human recombinant beta Defensin 1 lysate. Using beta Defensin 1 Rabbit mAb [DVIq] at dilution of 1:1000 incubated at 4°C over night.

View more information on <http://naturebios.com>

IMPORTANT: For western blots, incubate membrane with diluted primary antibody in 1% w/v Milk, 1X TBST at 4°C overnight.