

**RNF115 Rabbit mAb [PVd4]**

**Cat NO. :A27884**

**Information:**

Applications	Reactivity:	UniProt ID:	MW(kDa)	Host	Isotype	Size
WB	Human,Mouse,R at	Q9Y4L5	37kDa	Rabbit	IgG	50ul,100ul,200ul

**Applications detail:**

Application	Dilution
WB	1:1000-2000
The optimal dilutions should be determined by the end user	

**Conjugate:**

UnConjugate

**Form:**

Liquid

**sensitivity:**

Endogenous

**Purification:**

Affinity-chromatography

**Specificity:**

Antibody is produced by immunizing animals with A synthesized peptide derived from human RNF115

**Storage buffer and conditions:**

Antibody store in 10 mM PBS, 0.5mg/ml BSA, 50% glycerol (buffer) .

Shipped at 4°C. Store at-20°C or -80°C.

Products are valid for one natural year of receipt.Avoid repeated freeze / thaw cycles.

**Tissue specificity:**

Expressed at extremely low levels in normal breast, prostate, lung, colon. Higher levels of expression are detected in heart, skeletal muscle, testis as well as in breast and prostate cancer cells..

**Subcellular location:**

Cytoplasm, cytosol.

**Function:**

**Introduction:** **WB:** Western Blot **IP:** Immunoprecipitation **IHC:** Immunohistochemistry **ChIP:** Chromatin Immunoprecipitation **ICC/IF:** Immunocytochemistry/Immunofluorescence **F:** Flow Cytometry

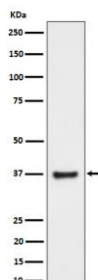
**Cross Reactivity:** **H:** human **M:** mouse **R:** rat **Hm:** hamster **Mk:** monkey **Vr:** virus **Ml:** mink **C:** chicken **Dm** D. melanogaster **X:** Xenopus **Z:** zebrafish **B:** bovine **Dg:** dog **Pg:** pig **Hr:** horse

**For Research Use Only. Not For Use In Diagnostic Procedures.**

E3 ubiquitin-protein ligase that mediates E2-dependent, 'Lys-48'- and/or 'Lys-63'-linked polyubiquitination of substrates and may play a role in diverse biological processes. Through their polyubiquitination, may play a role in the endosomal trafficking and degradation of membrane receptors including EGFR, FLT3, MET and CXCR4..

## Validation Data:

### RNF115 Rabbit mAb [PVd4] Images



Western blot ( SDS PAGE ) analysis of extracts from PC-3 cell lysate.Using RNF115 Rabbit mAb [PVd4]at dilution of 1:1000 incubated at 4°C over night.

View more information on <http://naturebios.com>

**IMPORTANT:** For western blots, incubate membrane with diluted primary antibody in 1% w/v Milk, 1X TBST at 4°C overnight.