

PPP6C Rabbit mAb [i6Pd]

Cat NO. :A32838

Information:

Applications	Reactivity:	UniProt ID:	MW(kDa)	Host	Isotype	Size
WB ICC/IF FC	Human	O00743	32kDa	Rabbit	IgG	50ul,100ul,200ul

Applications detail:

Application	Dilution
WB	1:1000-2000
ICC/IF	1:100
The optimal dilutions should be determined by the end user	

Conjugate:

UnConjugate

Form:

Liquid

sensitivity:

Endogenous

Purification:

Affinity-chromatography

Specificity:

Antibody is produced by immunizing animals with A synthesized peptide derived from human PPP6C

Storage buffer and conditions :

Antibody store in 10 mM PBS, 0.5mg/ml BSA, 50% glycerol (buffer) .

Shipped at 4°C. Store at-20°C or -80°C.

Products are valid for one natural year of receipt.Avoid repeated freeze / thaw cycles.

Tissue specificity:

Ubiquitously expressed in all tissues tested with highest expression levels in testis, heart, kidney, brain, stomach, liver and skeletal muscle and lowest in placenta, lung colon and spleen..

Subcellular location:

Mitochondrion. Cytoplasm.

Function:

Introduction: **WB:** Western Blot **IP:** Immunoprecipitation **IHC:** Immunohistochemistry **ChIP:** Chromatin Immunoprecipitation **ICC/IF:** Immunocytochemistry/Immunofluorescence **F:** Flow Cytometry

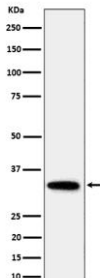
Cross Reactivity: **H:** human **M:** mouse **R:** rat **Hm:** hamster **Mk:** monkey **Vir:** virus **Ml:** mink **C:** chicken **Dm** D. melanogaster **X:** Xenopus **Z:** zebrafish **B:** bovine **Dg:** dog **Pg:** pig **Hr:** horse

For Research Use Only. Not For Use In Diagnostic Procedures.

Catalytic subunit of protein phosphatase 6 (PP6) (PubMed:17079228, PubMed:29053956, PubMed:32474700). PP6 is a component of a signaling pathway regulating cell cycle progression in response to IL2 receptor stimulation (PubMed:10227379). N-terminal domain restricts G1 to S phase progression in cancer cells, in part through control of cyclin D1 (PubMed:17568194). During mitosis, regulates spindle positioning (PubMed:27335426). Down-regulates MAP3K7 kinase activation of the IL1 signaling pathway by dephosphorylation of MAP3K7 (PubMed:17079228). Participates also in the innate immune defense against viruses by dephosphorylating RIG-I/DDX58, an essential step that triggers RIG-I/DDX58-mediated signaling activation (PubMed:29053956). Also regulates innate immunity by acting as a negative regulator of the cGAS-STING pathway: mediates dephosphorylation and inactivation of CGAS and STING1 (PubMed:32753499, PubMed:32474700). CGAS dephosphorylation at 'Ser-435' impairs its ability to bind GTP, thereby inactivating it (PubMed:32474700)..

Validation Data:

PPP6C Rabbit mAb [i6Pd] Images



Western blot (SDS PAGE) analysis of extracts from HeLa cell lysate.Using PPP6C Rabbit mAb [i6Pd]at dilution of 1:1000 incubated at 4°C over night.

View more information on <http://naturebios.com>

IMPORTANT: For western blots, incubate membrane with diluted primary antibody in 1% w/v Milk, 1X TBST at 4°C overnight.