

NEK7 Rabbit mAb [QFWB]

Cat NO. :A36174

Information:

| Applications | Reactivity: | UniProt ID: | MW(kDa) | Host | Isotype | Size |
|--------------|---------------------|-------------|---------|--------|---------|------------------|
| WB FC | Human,Mouse,R at | Q8TDX7 | 35kDa | Rabbit | IgG | 50ul,100ul,200ul |

Applications detail:

| Application | Dilution |
|--|-------------|
| WB | 1:1000-2000 |
| The optimal dilutions should be determined by the end user | |

Conjugate:

UnConjugate

Form:

Liquid

sensitivity:

Endogenous

Purification:

Affinity-chromatography

Specificity:

Antibody is produced by immunizing animals with A synthesized peptide derived from human NEK7

Storage buffer and conditions:

Antibody store in 10 mM PBS, 0.5mg/ml BSA, 50% glycerol (buffer) .

Shipped at 4°C. Store at-20°C or -80°C.

Products are valid for one natural year of receipt.Avoid repeated freeze / thaw cycles.

Tissue specificity:

Highly expressed in lung, muscle, testis, brain, heart, liver, leukocyte and spleen. Lower expression in ovary, prostate and kidney. No expression seen in small intestine..

Subcellular location:

Nucleus. Cytoplasm. Cytoplasm, cytoskeleton, spindle pole. Cytoplasm, cytoskeleton, microtubule organizing center, centrosome.

Function:

Introduction: **WB:** Western Blot **IP:** Immunoprecipitation **IHC:** Immunohistochemistry **ChIP:** Chromatin Immunoprecipitation **ICC/IF:** Immunocytochemistry/Immunofluorescence **F:** Flow Cytometry

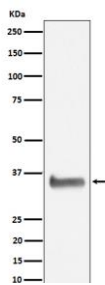
Cross Reactivity: **H:** human **M:** mouse **R:** rat **Hm:** hamster **Mk:** monkey **Vr:** virus **Ml:** mink **C:** chicken **Dm** D. melanogaster **X:** Xenopus **Z:** zebrafish **B:** bovine
Dg: dog **Pg:** pig **Hr:** horse

For Research Use Only. Not For Use In Diagnostic Procedures.

Protein kinase which plays an important role in mitotic cell cycle progression (PubMed:17101132). Required for microtubule nucleation activity of the centrosome, robust mitotic spindle formation and cytokinesis (PubMed:17586473, PubMed:19414596). Phosphorylates RPS6KB1 (By similarity). Phosphorylates EML4 at 'Ser-146', promoting its dissociation from microtubules during mitosis which is required for efficient chromosome congression (PubMed:31409757). Essential protein for NLRP3 inflammasome assembly and activation that acts downstream stimuli such as K(+) efflux. Dispensable for the induction of core inflammasome components, but necessary for subsequent formation of the NLRP3:PYCARD complex, and activation of CASP1. Serves as a cellular switch that enforces mutual exclusivity of the inflammasome response and cell division. Exerts its effects on the NLRP3 inflammasome independently of its kinase activity (PubMed:26642356)..

Validation Data:

NEK7 Rabbit mAb [QFWB] Images



Western blot (SDS PAGE) analysis of extracts from Jurkat cell lysate.Using NEK7 Rabbit mAb [QFWB]at dilution of 1:1000 incubated at 4°C over night.

View more information on <http://naturebios.com>

IMPORTANT: For western blots, incubate membrane with diluted primary antibody in 1% w/v Milk, 1X TBST at 4°C overnight.