

CD147 Rabbit mAb [Qib2]

Cat NO. :A42283

Information:

Applications	Reactivity:	UniProt ID:	MW(kDa)	Host	Isotype	Size
WB IHC ICC/IF IP	Mouse	P18572(mouse)	45-55kDa	Rabbit	IgG	50ul,100ul,200ul

Applications detail:

Application	Dilution
WB	1:1000-2000
IHC	1:100
ICC/IF	1:100
The optimal dilutions should be determined by the end user	

Conjugate:

UnConjugate

Form:

Liquid

sensitivity:

Endogenous

Purification:

Affinity-chromatography

Specificity:

Antibody is produced by immunizing animals with A synthesized peptide derived from human CD147

Storage buffer and conditions:

Antibody store in 10 mM PBS, 0.5mg/ml BSA, 50% glycerol (buffer) .

Shipped at 4°C. Store at-20°C or -80°C.

Products are valid for one natural year of receipt.Avoid repeated freeze / thaw cycles.

Tissue specificity:

[Isoform 1]: Retina-specific (PubMed:12939332, PubMed:11273674, PubMed:11853760, PubMed:25957687).

Expressed in both rods and cones (at protein level) (PubMed:25957687)...[Isoform 2]: Testis and

Subcellular location:

[Isoform 1]: Cell membrane,Single-pass type I membrane protein. Photoreceptor inner segment. Cell projection, cilium, photoreceptor outer segment.,[Isoform 2]: Cell membrane,Single-pass type I

Function:

Introduction: **WB:** Western Blot **IP:** Immunoprecipitation **IHC:** Immunohistochemistry **ChIP:** Chromatin Immunoprecipitation **ICC/IF:** Immunocytochemistry/Immunofluorescence **F:** Flow Cytometry

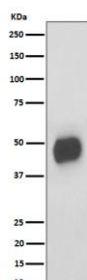
Cross Reactivity: **H:** human **M:** mouse **R:** rat **Hm:** hamster **Mk:** monkey **Vr:** virus **Ml:** mink **C:** chicken **Dm** D. melanogaster **X:** Xenopus **Z:** zebrafish **B:** bovine **Dg:** dog **Pg:** pig **Hr:** horse

For Research Use Only. Not For Use In Diagnostic Procedures.

[Isoform 1]: Essential for normal retinal maturation and development (PubMed:10967074, PubMed:11273674, PubMed:11853760). Acts as a retinal cell surface receptor for NXNL1 and plays an important role in NXNL1-mediated survival of retinal cone photoreceptors (PubMed:25957687). In association with glucose transporter SLC16A1/GLUT1 and NXNL1, promotes retinal cone survival by enhancing aerobic glycolysis and accelerating the entry of glucose into photoreceptors (PubMed:25957687).. [Isoform 2]: Signaling receptor for cyclophilins, essential for PPIA/CYPA and PPIB/CYPB-dependent signaling related to chemotaxis and adhesion of immune cells (By similarity). Plays an important role in targeting the monocarboxylate transporters SLC16A1/GLUT1, SLC16A3 and SLC16A8 to the plasma membrane (PubMed:12601063). Acts as a coreceptor for vascular endothelial growth factor receptor 2 (KDR/VEGFR2) in endothelial cells enhancing its VEGFA-mediated activation and downstream signaling (By similarity). Promotes angiogenesis through EPAS1/HIF2A-mediated up-regulation of VEGFA and KDR/VEGFR2 in endothelial cells (By similarity). Plays an important role in spermatogenesis, mediates interactions between germ cells and Sertoli cell and is essential for the development/differentiation of germ cells to round spermatids (PubMed:23727514, PubMed:11882021)..

Validation Data:

CD147 Rabbit mAb [Qib2] Images



Western blot (SDS PAGE) analysis of extracts from RAW 264.7 cell lysate. Using CD147 Rabbit mAb [Qib2] at dilution of 1:1000 incubated at 4°C overnight.

View more information on <http://naturebios.com>

IMPORTANT: For western blots, incubate membrane with diluted primary antibody in 1% w/v Milk, 1X TBST at 4°C overnight.