

RYK Rabbit mAb [988G]

Cat NO. :A63671

Information:

Applications	Reactivity:	UniProt ID:	MW(kDa)	Host	Isotype	Size
WB IHC ICC/IF IP FC	Human	P34925	72kDa	Rabbit	IgG	50ul,100ul,200ul

Applications detail:

Application	Dilution
WB	1:1000-2000
IHC	1:100
ICC/IF	1:100
The optimal dilutions should be determined by the end user	

Conjugate:

UnConjugate

Form:

Liquid

sensitivity:

Endogenous

Purification:

Affinity-chromatography

Specificity:

Antibody is produced by immunizing animals with A synthesized peptide derived from human RYK

Storage buffer and conditions:

Antibody store in 10 mM PBS, 0.5mg/ml BSA, 50% glycerol (buffer) .

Shipped at 4°C. Store at-20°C or -80°C.

Products are valid for one natural year of receipt.Avoid repeated freeze / thaw cycles.

Tissue specificity:

Observed in all the tissues examined.

Subcellular location:

Membrane,Single-pass type I membrane protein. Nucleus. Cytoplasm.

Function:

Introduction: **WB:** Western Blot **IP:** Immunoprecipitation **IHC:** Immunohistochemistry **ChIP:** Chromatin Immunoprecipitation **ICC/IF:** Immunocytochemistry/Immunofluorescence **F:** Flow Cytometry

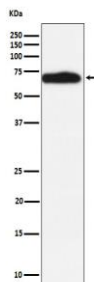
Cross Reactivity: **H:** human **M:** mouse **R:** rat **Hm:** hamster **Mk:** monkey **Vr:** virus **Ml:** mink **C:** chicken **Dm** D. melanogaster **X:** Xenopus **Z:** zebrafish **B:** bovine
Dg: dog **Pg:** pig **Hr:** horse

For Research Use Only. Not For Use In Diagnostic Procedures.

May be a coreceptor along with FZD8 of Wnt proteins, such as WNT1, WNT3, WNT3A and WNT5A. Involved in neuron differentiation, axon guidance, corpus callosum establishment and neurite outgrowth. In response to WNT3 stimulation, receptor C-terminal cleavage occurs in its transmembrane region and allows the C-terminal intracellular product to translocate from the cytoplasm to the nucleus where it plays a crucial role in neuronal development..

Validation Data:

RYP Rabbit mAb [988G] Images



Western blot (SDS PAGE) analysis of extracts from MCF7 cell lysate.Using RYP Rabbit mAb [988G]at dilution of 1:1000 incubated at 4°C over night.

View more information on <http://naturebios.com>

IMPORTANT: For western blots, incubate membrane with diluted primary antibody in 1% w/v Milk, 1X TBST at 4°C overnight.