

**ILK Rabbit mAb [MAQM]**

**Cat NO. :A69955**

**Information:**

Applications	Reactivity:	UniProt ID:	MW(kDa)	Host	Isotype	Size
WB IHC ICC/IF IP FC	Human,Mouse,R at	Q13418	51kDa	Rabbit	IgG	50ul,100ul,200ul

**Applications detail:**

Application	Dilution
WB	1:1000-2000
IHC	1:100
ICC/IF	1:100
The optimal dilutions should be determined by the end user	

**Conjugate:**

UnConjugate

**Form:**

Liquid

**sensitivity:**

Endogenous

**Purification:**

Affinity-chromatography

**Specificity:**

Antibody is produced by immunizing animals with A synthesized peptide derived from human ILK

**Storage buffer and conditions:**

Antibody store in 10 mM PBS, 0.5mg/ml BSA, 50% glycerol (buffer) .

Shipped at 4°C. Store at-20°C or -80°C.

Products are valid for one natural year of receipt.Avoid repeated freeze / thaw cycles.

**Tissue specificity:**

Highly expressed in heart followed by skeletal muscle, pancreas and kidney. Weakly expressed in placenta, lung and liver.

**Subcellular location:**

Cell junction, focal adhesion. Cell membrane,Peripheral membrane protein,Cytoplasmic side. Cell projection, lamellipodium. Cytoplasm, myofibril, sarcomere.

**Function:**

**Introduction:** **WB:** Western Blot **IP:** Immunoprecipitation **IHC:** Immunohistochemistry **ChIP:** Chromatin Immunoprecipitation **ICC/IF:** Immunocytochemistry/ Immunofluorescence **F:** Flow Cytometry

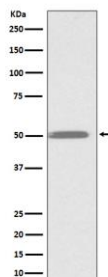
**Cross Reactivity:** **H:** human **M:** mouse **R:** rat **Hm:** hamster **Mk:** monkey **Vr:** virus **Ml:** mink **C:** chicken **Dm** D. melanogaster **X:** Xenopus **Z:** zebrafish **B:** bovine **Dg:** dog **Pg:** pig **Hr:** horse

**For Research Use Only. Not For Use In Diagnostic Procedures.**

Receptor-proximal protein kinase regulating integrin-mediated signal transduction (PubMed:8538749, PubMed:9736715). May act as a mediator of inside-out integrin signaling (PubMed:10712922). Focal adhesion protein part of the complex ILK-PINCH (PubMed:10712922). This complex is considered to be one of the convergence points of integrin- and growth factor-signaling pathway (PubMed:10712922). Could be implicated in mediating cell architecture, adhesion to integrin substrates and anchorage-dependent growth in epithelial cells (PubMed:10712922). Regulates cell motility by forming a complex with PARVB (PubMed:32528174). Phosphorylates beta-1 and beta-3 integrin subunit on serine and threonine residues, but also AKT1 and GSK3B (PubMed:8538749, PubMed:9736715)..

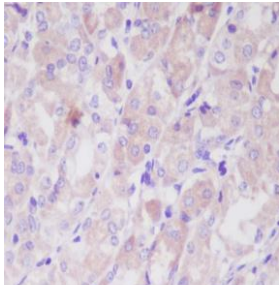
### Validation Data:

#### ILK Rabbit mAb [MAQM] Images

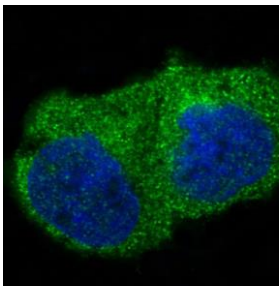


Western blot ( SDS PAGE ) analysis of extracts from K562 cell lysate.Using ILK Rabbit mAb [MAQM]at dilution of 1:1000 incubated at 4°C over night.

View more information on <http://naturebios.com>



Immunohistochemical analysis of paraffin-embedded human stomach, .Using ILK Rabbit mAb [MAQM] at dilution of 1:100 incubated at 4 °C over night. Perform heat mediated antigen retrieval before commencing with IHC staining protocol.



Immunofluorescent analysis of 293 cells, Using ILK Rabbit mAb [MAQM] at dilution of 1:100 incubated at 4 °C over night.

**IMPORTANT:** For western blots, incubate membrane with diluted primary antibody in 1% w/v Milk, 1X TBST at 4°C overnight.