

Pannexin 1 Rabbit mAb [gxYi]

Cat NO. :A71056

Information:

| Applications | Reactivity: | UniProt ID: | MW(kDa) | Host | Isotype | Size |
|--------------|-------------|-------------|---------|--------|---------|------------------|
| WB IP | Human | Q96RD7 | 48kDa | Rabbit | IgG | 50ul,100ul,200ul |

Applications detail:

| Application | Dilution |
|--|-------------|
| WB | 1:1000-2000 |
| The optimal dilutions should be determined by the end user | |

Conjugate:

UnConjugate

Form:

Liquid

sensitivity:

Endogenous

Purification:

Affinity-chromatography

Specificity:

Antibody is produced by immunizing animals with A synthesized peptide derived from human Pannexin 1

Storage buffer and conditions:

Antibody store in 10 mM PBS, 0.5mg/ml BSA, 50% glycerol (buffer) .

Shipped at 4°C. Store at-20°C or -80°C.

Products are valid for one natural year of receipt.Avoid repeated freeze / thaw cycles.

Tissue specificity:

Widely expressed (PubMed:30918116). Highest expression is observed in oocytes and brain (PubMed:30918116).

Detected at very low levels in sperm cells (PubMed:30918116)..

Subcellular location:

Cell membrane,Multi-pass membrane protein. Cell junction, gap junction. Endoplasmic reticulum membrane,Multi-pass membrane protein.

Function:

Introduction: **WB:** Western Blot **IP:** Immunoprecipitation **IHC:** Immunohistochemistry **ChIP:** Chromatin Immunoprecipitation **ICC/IF:** Immunocytochemistry/Immunofluorescence **F:** Flow Cytometry

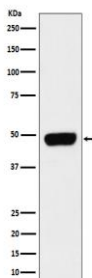
Cross Reactivity: **H:** human **M:** mouse **R:** rat **Hm:** hamster **Mk:** monkey **Vr:** virus **Ml:** mink **C:** chicken **Dm** D. melanogaster **X:** Xenopus **Z:** zebrafish **B:** bovine **Dg:** dog **Pg:** pig **Hr:** horse

For Research Use Only. Not For Use In Diagnostic Procedures.

Structural component of the gap junctions and the hemichannels involved in the ATP release and nucleotide permeation (PubMed:16908669, PubMed:20829356, PubMed:30918116). May play a role as a Ca(2+)-leak channel to regulate ER Ca(2+) homeostasis (PubMed:16908669). Plays a critical role in oogenesis (PubMed:30918116)..

Validation Data:

Pannexin 1 Rabbit mAb [gxYi] Images



Western blot (SDS PAGE) analysis of extracts from Caco-2 cell lysate.Using Pannexin 1 Rabbit mAb [gxYi]at dilution of 1:1000 incubated at 4°C over night.

View more information on <http://naturebios.com>

IMPORTANT: For western blots, incubate membrane with diluted primary antibody in 1% w/v Milk, 1X TBST at 4°C overnight.