

**TRAPPC2 Rabbit mAb [WD5N]**

**Cat NO. :A74151**

**Information:**

| Applications  | Reactivity:         | UniProt ID: | MW(kDa) | Host   | Isotype | Size             |
|---------------|---------------------|-------------|---------|--------|---------|------------------|
| WB IHC ICC/IF | Human,Mouse,R<br>at | P0DI81      | 16kDa   | Rabbit | IgG     | 50ul,100ul,200ul |

**Applications detail:**

| Application  | Dilution    |
|--|-------------|
| WB   | 1:1000-2000 |
| IHC  | 1:100       |
| ICC/IF   | 1:100       |
| The optimal dilutions should be determined by the end user |             |

**Conjugate:**

UnConjugate

**Form:**

Liquid

**sensitivity:**

Endogenous

**Purification:**

Affinity-chromatography

**Specificity:**

Antibody is produced by immunizing animals with A synthesized peptide derived from human TRAPPC2

**Storage buffer and conditions:**

Antibody store in 10 mM PBS, 0.5mg/ml BSA, 50% glycerol (buffer) .

Shipped at 4°C. Store at-20°C or -80°C.

Products are valid for one natural year of receipt.Avoid repeated freeze / thaw cycles.

**Tissue specificity:**

Expressed in brain, heart, kidney, liver, lung, pancreas, placenta, skeletal muscle, fetal cartilage, fibroblasts, placenta and lymphocytes..

**Subcellular location:**

Cytoplasm, perinuclear region. Endoplasmic reticulum-Golgi intermediate compartment. Nucleus. Cytoplasm.

**Function:**

**Introduction:** **WB:** Western Blot **IP:** Immunoprecipitation **IHC:** Immunohistochemistry **ChIP:** Chromatin Immunoprecipitation **ICC/IF:** Immunocytochemistry/ Immunofluorescence **F:** Flow Cytometry

**Cross Reactivity:** **H:** human **M:** mouse **R:** rat **Hm:** hamster **Mk:** monkey **Vr:** virus **Ml:** mink **C:** chicken **Dm** D. melanogaster **X:** Xenopus **Z:** zebrafish **B:** bovine **Dg:** dog **Pg:** pig **Hr:** horse

**For Research Use Only. Not For Use In Diagnostic Procedures.**

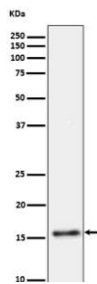
---

Prevents transcriptional repression and induction of cell death by ENO1 (By similarity). May play a role in vesicular transport from endoplasmic reticulum to Golgi..

## Validation Data:

### TRAPPC2 Rabbit mAb [WD5N] Images

---



Western blot ( SDS PAGE ) analysis of extracts from Raji cell lysate.Using TRAPPC2 Rabbit mAb [WD5N]at dilution of 1:1000 incubated at 4°C over night.

View more information on <http://naturebios.com>

**IMPORTANT:** For western blots, incubate membrane with diluted primary antibody in 1% w/v Milk, 1X TBST at 4°C overnight.