

**TFPI Rabbit mAb [bBu2]**

**Cat NO. :A76821**

**Information:**

| Applications | Reactivity: | UniProt ID: | MW(kDa)  | Host   | Isotype | Size             |
|--------------|-------------|-------------|----------|--------|---------|------------------|
| WB           | Human       | P10646      | 35-45kDa | Rabbit | IgG     | 50ul,100ul,200ul |

**Applications detail:**

| Application  | Dilution    |
|--|-------------|
| WB   | 1:1000-2000 |
| The optimal dilutions should be determined by the end user |             |

**Conjugate:**

UnConjugate

**Form:**

Liquid

**sensitivity:**

Endogenous

**Purification:**

Affinity-chromatography

**Specificity:**

Antibody is produced by immunizing animals with A synthesized peptide derived from human TFPI

**Storage buffer and conditions:**

Antibody store in 10 mM PBS, 0.5mg/ml BSA, 50% glycerol (buffer) .

Shipped at 4°C. Store at-20°C or -80°C.

Products are valid for one natural year of receipt.Avoid repeated freeze / thaw cycles.

**Tissue specificity:**

Mostly in endothelial cells.

**Subcellular location:**

[Isoform Alpha]: Secreted.,[Isoform Beta]: Microsome membrane,Lipid-anchor, GPI-anchor.

**Function:**

Inhibits factor X (X(a)) directly and, in a Xa-dependent way, inhibits VIIa/tissue factor activity, presumably by forming a quaternary Xa/LACI/VIIa/TF complex. It possesses an antithrombotic action and also the ability to associate with lipoproteins in plasma.

**Introduction:** **WB:** Western Blot **IP:** Immunoprecipitation **IHC:** Immunohistochemistry **ChIP:** Chromatin Immunoprecipitation **ICC/IF:** Immunocytochemistry/Immunofluorescence **F:** Flow Cytometry

**Cross Reactivity:** **H:** human **M:** mouse **R:** rat **Hm:** hamster **Mk:** monkey **Vr:** virus **Ml:** mink **C:** chicken **Dm** D. melanogaster **X:** Xenopus **Z:** zebrafish **B:** bovine **Dg:** dog **Pg:** pig **Hr:** horse

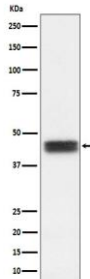
**For Research Use Only. Not For Use In Diagnostic Procedures.**

---

**Validation Data:**

**TFPI Rabbit mAb [bBu2] Images**

---



Western blot ( SDS PAGE ) analysis of extracts from U87-MG cell lysate.Using TFPI Rabbit mAb [bBu2]at dilution of 1:1000 incubated at 4°C over night.

View more information on <http://naturebios.com>

**IMPORTANT:** For western blots, incubate membrane with diluted primary antibody in 1% w/v Milk, 1X TBST at 4°C overnight.