

**SCGN Rabbit mAb [2R8x]**

**Cat NO. :A88806**

**Information:**

| Applications | Reactivity:         | UniProt ID: | MW(kDa) | Host   | Isotype | Size             |
|--------------|---------------------|-------------|---------|--------|---------|------------------|
| WB IHC IP    | Human,Mouse,R<br>at | O76038      | 32kDa   | Rabbit | IgG     | 50ul,100ul,200ul |

**Applications detail:**

| Application  | Dilution    |
|--|-------------|
| WB   | 1:1000-2000 |
| IHC  | 1:100       |
| The optimal dilutions should be determined by the end user |             |

**Conjugate:**

UnConjugate

**Form:**

Liquid

**sensitivity:**

Endogenous

**Purification:**

Affinity-chromatography

**Specificity:**

Antibody is produced by immunizing animals with A synthesized peptide derived from human SCGN

**Storage buffer and conditions:**

Antibody store in 10 mM PBS, 0.5mg/ml BSA, 50% glycerol (buffer) .

Shipped at 4°C. Store at-20°C or -80°C.

Products are valid for one natural year of receipt.Avoid repeated freeze / thaw cycles.

**Tissue specificity:**

Expressed at high levels in the pancreatic islets of Langerhans and to a much lesser extent in the gastrointestinal tract (stomach, small intestine and colon), the adrenal medulla and cortex and the

**Subcellular location:**

Cytoplasm. Secreted. Cytoplasmic vesicle, secretory vesicle membrane,Peripheral membrane protein,Cytoplasmic side.

**Function:**

**Introduction:** **WB:** Western Blot **IP:** Immunoprecipitation **IHC:** Immunohistochemistry **ChIP:** Chromatin Immunoprecipitation **ICC/IF:** Immunocytochemistry/Immunofluorescence **F:** Flow Cytometry

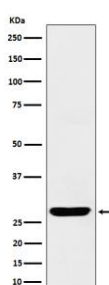
**Cross Reactivity:** **H:** human **M:** mouse **R:** rat **Hm:** hamster **Mk:** monkey **Vr:** virus **Ml:** mink **C:** chicken **Dm** D. melanogaster **X:** Xenopus **Z:** zebrafish **B:** bovine **Dg:** dog **Pg:** pig **Hr:** horse

**For Research Use Only. Not For Use In Diagnostic Procedures.**

## Validation Data:

### SCGN Rabbit mAb [2R8x] Images

---



Western blot (SDS PAGE) analysis of extracts from human fetal brain lysate. Using SCGN Rabbit mAb [2R8x] at dilution of 1:1000 incubated at 4°C overnight.

View more information on <http://naturebios.com>

**IMPORTANT:** For western blots, incubate membrane with diluted primary antibody in 1% w/v Milk, 1X TBST at 4°C overnight.