

IL15RA Rabbit mAb [i4c8]

Cat NO. :A93880

Information:

Applications	Reactivity:	UniProt ID:	MW(kDa)	Host	Isotype	Size
WB ICC/IF	Human	Q13261	38kDa	Rabbit	IgG	50ul,100ul,200ul

Applications detail:

Application	Dilution
WB	1:1000-2000
ICC/IF	1:100
The optimal dilutions should be determined by the end user	

Conjugate:

UnConjugate

Form:

Liquid

sensitivity:

Endogenous

Purification:

Affinity-chromatography

Specificity:

Antibody is produced by immunizing animals with A synthesized peptide derived from human IL15RA

Storage buffer and conditions:

Antibody store in 10 mM PBS, 0.5mg/ml BSA, 50% glycerol (buffer) .

Shipped at 4°C. Store at-20°C or -80°C.

Products are valid for one natural year of receipt.Avoid repeated freeze / thaw cycles.

Tissue specificity:

Expressed in neutrophils (at protein level) (PubMed:15123770). Expressed in fetal brain with higher expression in the hippocampus and cerebellum than in cortex and thalamus (PubMed:12114302). Higher

Subcellular location:

Membrane,Single-pass type I membrane protein. Nucleus membrane,Single-pass type I membrane protein. Cell surface.

Function:

Introduction: **WB:** Western Blot **IP:** Immunoprecipitation **IHC:** Immunohistochemistry **ChIP:** Chromatin Immunoprecipitation **ICC/IF:** Immunocytochemistry/Immunofluorescence **F:** Flow Cytometry

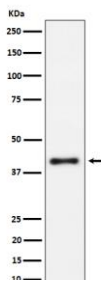
Cross Reactivity: **H:** human **M:** mouse **R:** rat **Hm:** hamster **Mk:** monkey **Vir:** virus **Ml:** mink **C:** chicken **Dm** D. melanogaster **X:** Xenopus **Z:** zebrafish **B:** bovine **Dg:** dog **Pg:** pig **Hr:** horse

For Research Use Only. Not For Use In Diagnostic Procedures.

High-affinity receptor for interleukin-15 (PubMed:8530383). Can signal both in cis and trans where IL15R from one subset of cells presents IL15 to neighboring IL2RG-expressing cells (By similarity). In neutrophils, binds and activates kinase SYK in response to IL15 stimulation (PubMed:15123770). In neutrophils, required for IL15-induced phagocytosis in a SYK-dependent manner (PubMed:15123770). Expression of different isoforms may alter or interfere with signal transduction (PubMed:10480910).., [Isoform 5]: Does not bind IL15.., [Isoform 6]: Does not bind IL15.., [Isoform 7]: Does not bind IL15.., [Isoform 8]: Does not bind IL15..

Validation Data:

IL15RA Rabbit mAb [i4c8] Images



Western blot (SDS PAGE) analysis of extracts from Raji cell lysate. Using IL15RA Rabbit mAb [i4c8] at dilution of 1:1000 incubated at 4 °C over night.

View more information on <http://naturebios.com>

IMPORTANT: For western blots, incubate membrane with diluted primary antibody in 1% w/v Milk, 1X TBST at 4°C overnight.