

NeuroD2 Rabbit mAb [3040]

Cat NO. :A96364

Information:

Applications	Reactivity:	UniProt ID:	MW(kDa)	Host	Isotype	Size
WB	Human,Mouse,R at	Q15784	48kDa	Rabbit	IgG	50ul,100ul,200ul

Applications detail:

Application	Dilution
WB	1:1000-2000
The optimal dilutions should be determined by the end user	

Conjugate:

UnConjugate

Form:

Liquid

sensitivity:

Endogenous

Purification:

Affinity-chromatography

Specificity:

Antibody is produced by immunizing animals with A synthesized peptide derived from human NeuroD2

Storage buffer and conditions:

Antibody store in 10 mM PBS, 0.5mg/ml BSA, 50% glycerol (buffer) .

Shipped at 4°C. Store at-20°C or -80°C.

Products are valid for one natural year of receipt.Avoid repeated freeze / thaw cycles.

Tissue specificity:

Subcellular location:

Nucleus.

Function:

Introduction: **WB:** Western Blot **IP:** Immunoprecipitation **IHC:** Immunohistochemistry **ChIP:** Chromatin Immunoprecipitation **ICC/IF:** Immunocytochemistry/Immunofluorescence **F:** Flow Cytometry

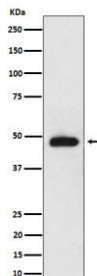
Cross Reactivity: **H:** human **M:** mouse **R:** rat **Hm:** hamster **Mk:** monkey **Vr:** virus **Ml:** mink **C:** chicken **Dm** D. melanogaster **X:** Xenopus **Z:** zebrafish **B:** bovine
Dg: dog **Pg:** pig **Hr:** horse

For Research Use Only. Not For Use In Diagnostic Procedures.

Transcriptional regulator implicated in neuronal determination. Mediates calcium-dependent transcription activation by binding to E box-containing promoter. Critical factor essential for the repression of the genetic program for neuronal differentiation, prevents the formation of synaptic vesicle clustering at active zone to the presynaptic membrane in postmitotic neurons. Induces transcription of ZEB1, which in turn represses neuronal differentiation by down-regulating REST expression. Plays a role in the establishment and maturation of thalamocortical connections, involved in the segregation of thalamic afferents into distinct barrel domains within layer VI of the somatosensory cortex. Involved in the development of the cerebellar and hippocampal granular neurons, neurons in the basolateral nucleus of amygdala and the hypothalamic-pituitary axis. Associates with chromatin to the DPYSL3 E box-containing promoter (By similarity)..

Validation Data:

NeuroD2 Rabbit mAb [3040] Images



Western blot (SDS PAGE) analysis of extracts from mouse cerebellum cell lysate. Using NeuroD2 Rabbit mAb [3040] at dilution of 1:1000 incubated at 4°C over night.

View more information on <http://naturebios.com>

IMPORTANT: For western blots, incubate membrane with diluted primary antibody in 1% w/v Milk, 1X TBST at 4°C overnight.