

CLCN1 Rabbit mAb [CN51]

Cat NO. :A33280

Information:

Applications	Reactivity:	UniProt ID:	MW(kDa)	Host	Isotype	Size
WB	H	P35523	109KDa	Rabbit	IgG	50ul,100ul,200ul

Applications detail:

Application	Dilution
WB	1:1000-2000
The optimal dilutions should be determined by the end user	

Conjugate:

UnConjugate

Form:

Liquid

sensitivity:

Endogenous

Purification:

Protein A purification

Specificity:

Antibody is produced by immunizing animals with a synthetic peptide of Human CLCN1.

Storage buffer and conditions:

Antibody store in 10 mM PBS, 0.5mg/ml BSA, 50% glycerol (buffer) .

Shipped at 4°C. Store at-20°C or -80°C.

Products are valid for one natural year of receipt.Avoid repeated freeze / thaw cycles.

Tissue specificity:

Predominantly expressed in skeletal muscles.

Subcellular location:

Cell membrane,Multi-pass membrane protein.

Function:

Voltage-gated chloride channel (PubMed:8112288, PubMed:9122265, PubMed:12456816). Plays an important role in membrane repolarization in skeletal muscle cells after muscle contraction. The CLC channel family contains both chloride channels and proton-coupled anion transporters that exchange chloride or another anion for protons (Probable). The absence of conserved gating glutamate residues is typical for family members that function as channels (Probable)..

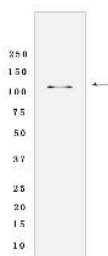
Introduction: **wb:** Western Blot **IP:** Immunoprecipitation **IHC:** Immunohistochemistry **ChIP:** Chromatin Immunoprecipitation **ICC/IF:** Immunocytochemistry/Immunofluorescence **F:** Flow Cytometry

Cross Reactivity: **H:** human **M:** mouse **R:** rat **Hm:** hamster **Mk:** monkey **Vir:** virus **Mi:** mink **C:** chicken **Dm** D. melanogaster **X:** Xenopus **Z:** zebrafish **B:** bovine **Dg:** dog **Pg:** pig **Hr:** horse

For Research Use Only. Not For Use In Diagnostic Procedures.

Validation Data:

CLCN1 Rabbit mAb [CN51] Images



Western blot(SDS-PAGE) analysis of extracts from 293T cells lysate.using CLCN1 Rabbit mAb [CN51] at dilution of 1:1000 incubated at 4°C over night.

View more information on <http://naturebios.com>

IMPORTANT: For western blots, incubate membrane with diluted primary antibody in 1% w/v Milk, 1X TBST at 4°C overnight.