

GSDMC Rabbit mAb [C9L1]

Cat NO. :A39790

Information:

Applications	Reactivity:	UniProt ID:	MW(kDa)	Host	Isotype	Size
WB	M,R	Q9BYG8	62KDa	Rabbit	IgG	50ul,100ul,200ul

Applications detail:

Application	Dilution
WB	1:1000-2000
The optimal dilutions should be determined by the end user	

Conjugate:

UnConjugate

Form:

Liquid

sensitivity:

Endogenous

Purification:

Protein A purification

Specificity:

Antibody is produced by immunizing animals with a synthetic peptide of Human GSDMC.

Storage buffer and conditions:

Antibody store in 10 mM PBS, 0.5mg/ml BSA, 50% glycerol (buffer) .

Shipped at 4°C. Store at -20°C or -80°C.

Products are valid for one natural year of receipt.Avoid repeated freeze / thaw cycles.

Tissue specificity:

Expressed mainly in trachea and spleen (PubMed:11223543). In the esophagus, expressed in differentiating cells and probably in differentiated cells. Also detected in gastric epithelium

Subcellular location:

[Gasdermin-C]: Cytoplasm, cytosol.,[Gasdermin-C, N-terminal]: Cell membrane,Multi-pass membrane protein.

Function:

Introduction: **WB:** Western Blot **IP:** Immunoprecipitation **IHC:** Immunohistochemistry **ChIP:** Chromatin Immunoprecipitation **ICC/IF:** Immunocytochemistry/Immunofluorescence **F:** Flow Cytometry

Cross Reactivity: **H:** human **M:** mouse **R:** rat **Hm:** hamster **Mk:** monkey **Vir:** virus **Ml:** mink **C:** chicken **Dm** D. melanogaster **X:** Xenopus **Z:** zebrafish **B:** bovine **Dg:** dog **Pg:** pig **Hr:** horse

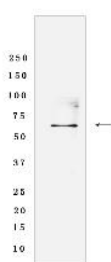
For Research Use Only. Not For Use In Diagnostic Procedures.

[Gasdermin-C]: This form constitutes the precursor of the pore-forming protein: upon cleavage, the released N-terminal moiety (Gasdermin-C, N-terminal) binds to membranes and forms pores, triggering cell death..

[Gasdermin-C, N-terminal]: Pore-forming protein that causes membrane permeabilization and pyroptosis (PubMed:27281216). Released upon cleavage and binds to membrane inner leaflet lipids. Homooligomerizes within the membrane and forms pores of 10-15 nanometers (nm) of inner diameter, triggering pyroptosis (By similarity). The functional mechanisms and physiological proteases that cleave and activate this pore-forming protein are unknown (Probable)..

Validation Data:

GSDMC Rabbit mAb [C9L1] Images



Western blot(SDS-PAGE) analysis of extracts from RAW264.7 cells lysate.using GSDMC Rabbit mAb [C9L1] at dilution of 1:1000 incubated at 4°C over night.

View more information on <http://naturebios.com>

IMPORTANT: For western blots, incubate membrane with diluted primary antibody in 1% w/v Milk, 1X TBST at 4°C overnight.