

AMN Rabbit mAb [087E]

Cat NO. :A13460

Information:

Applications	Reactivity:	UniProt ID:	MW(kDa)	Host	Isotype	Size
WB	H	Q9BXJ7	47 kDa	Rabbit	IgG	100ul,200ul

Applications detail:

Application	Dilution
WB	1:1000-2000
The optimal dilutions should be determined by the end user	

Conjugate:

UnConjugate

Form:

Liquid

sensitivity:

Endogenous

Purification:

Protein A purification

Specificity:

Antibody is produced by immunizing animals with a synthetic peptide of Human AMN.

Storage buffer and conditions:

Antibody store in 10 mM PBS, 0.5mg/ml BSA, 50% glycerol (buffer) .

Shipped at 4°C. Store at -20°C or -80°C.

Products are valid for one natural year of receipt.Avoid repeated freeze / thaw cycles.

Tissue specificity:

Detected in proximal tubules in the kidney cortex (at protein level) (PubMed:14576052, PubMed:29402915). Long isoforms are highly expressed in small intestine, colon and kidney (renal proximal tubule

Subcellular location:

[Isoform 1]: Apical cell membrane,Single-pass type I membrane protein. Cell membrane,Single-pass type I membrane protein. Endosome membrane. Membrane, coated pit.,[Soluble protein amnionless]:

Function:

Introduction: **WB:** Western Blot **IP:** Immunoprecipitation **IHC:** Immunohistochemistry **ChIP:** Chromatin Immunoprecipitation **ICC/IF:** Immunocytochemistry/Immunofluorescence **F:** Flow Cytometry

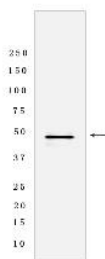
Cross Reactivity: **H:** human **M:** mouse **R:** rat **Hm:** hamster **Mk:** monkey **Vir:** virus **Ml:** mink **C:** chicken **Dm** D. melanogaster **X:** Xenopus **Z:** zebrafish **B:** bovine **Dg:** dog **Pg:** pig **Hr:** horse

For Research Use Only. Not For Use In Diagnostic Procedures.

Membrane-bound component of the endocytic receptor formed by AMN and CUBN (PubMed:14576052, PubMed:30523278, PubMed:29402915). Required for normal CUBN glycosylation and trafficking to the cell surface (PubMed:14576052, PubMed:29402915). The complex formed by AMN and CUBN is required for efficient absorption of vitamin B12 (PubMed:12590260, PubMed:14576052, PubMed:26040326). Required for normal CUBN-mediated protein transport in the kidney (Probable)..

Validation Data:

AMN Rabbit mAb [087E] Images



Western blot (SDS PAGE) analysis of extracts from Human small intestine tissue lysate using AMN Rabbit mAb [087E] at dilution of 1:1000 incubated at 4°C over

View more information on <http://naturebios.com>

IMPORTANT: For western blots, incubate membrane with diluted primary antibody in 1% w/v Milk, 1X TBST at 4°C overnight.