

**NFS1 Mouse mAb[Z0RH]**

**Cat NO. :A16002**

**Information:**

| Applications | Reactivity: | UniProt ID: | MW(kDa) | Host  | Isotype | Size             |
|--------------|-------------|-------------|---------|-------|---------|------------------|
| WB           | H,M,R       | Q9Y697      | 50kDa   | Mouse | IgG     | 50ul 100ul,200ul |

**Applications detail:**

| Application  | Dilution    |
|--|-------------|
| WB   | 1:1000-2000 |
| The optimal dilutions should be determined by the end user |             |

**Conjugate:**

UnConjugate

**Form:**

Liquid

**sensitivity:**

Endogenous

**Purification:**

Protein A purification

**Specificity:**

Antibody is produced by immunizing animals with a synthetic peptide of human NFS1.

**Storage buffer and conditions:**

Antibody store in 10 mM PBS, 0.5mg/ml BSA, 50% glycerol (buffer) .

Shipped at 4°C. Store at-20°C or -80°C.

Products are valid for one natural year of receipt.Avoid repeated freeze / thaw cycles.

**Tissue specificity:**

Predominantly expressed in heart and skeletal muscle. Also found in brain, liver and pancreas..

**Subcellular location:**

[Isoform Mitochondrial]: Mitochondrion.,[Isoform Cytoplasmic]: Cytoplasm. Nucleus.

**Function:**

Catalyzes the removal of elemental sulfur from cysteine to produce alanine (PubMed:18650437). It supplies the inorganic sulfur for iron-sulfur (Fe-S) clusters. May be involved in the biosynthesis of molybdenum cofactor (PubMed:18650437)..

**Introduction:** **WB:** Western Blot **IP:** Immunoprecipitation **IHC:** Immunohistochemistry **ChIP:** Chromatin Immunoprecipitation **ICC/IF:** Immunocytochemistry/Immunofluorescence **F:** Flow Cytometry

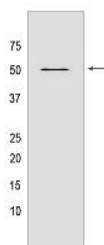
**Cross Reactivity:** **H:** human **M:** mouse **R:** rat **Hm:** hamster **Mk:** monkey **Vir:** virus **Ml:** mink **C:** chicken **Dm** D. melanogaster **X:** Xenopus **Z:** zebrafish **B:** bovine **Dg:** dog **Pg:** pig **Hr:** horse

**For Research Use Only. Not For Use In Diagnostic Procedures.**

## Validation Data:

### NFS1 Mouse mAb[Z0RH] Images

---



Western blot ( SDS PAGE ) analysis of extracts from HSC-T6 cells. Using NFS1 Mouse mAb IgG [Z0RH] at dilution of 1:1000 incubated at 4°C over night.

View more information on <http://naturebios.com>

**IMPORTANT:** For western blots, incubate membrane with diluted primary antibody in 1% w/v Milk, 1X TBST at 4°C overnight.