

**PDE7A/HCP1 Rabbit mAb [94XJ]**

**Cat NO. :A16093**

**Information:**

Applications	Reactivity:	UniProt ID:	MW(kDa)	Host	Isotype	Size
WB,IHC,ICC/IF	H	Q13946	56 kDa	Rabbit	IgG	100ul,200ul

**Applications detail:**

Application	Dilution
WB	1:1000-2000
IHC	1:100,
ICC/IF	1:100,
The optimal dilutions should be determined by the end user	

**Conjugate:**

UnConjugate

**Form:**

Liquid

**sensitivity:**

Endogenous

**Purification:**

Protein A purification

**Specificity:**

Antibody is produced by immunizing animals with a synthetic peptide of Human PDE7A/HCP1.

**Storage buffer and conditions:**

Antibody store in 10 mM PBS, 0.5mg/ml BSA, 50% glycerol (buffer) .

Shipped at 4°C. Store at-20°C or -80°C.

Products are valid for one natural year of receipt.Avoid repeated freeze / thaw cycles.

**Tissue specificity:**

[Isoform PDE7A1]: Found at high levels in skeletal muscle and at low levels in a variety of tissues including brain and heart (PubMed:9195912). It is expressed as well in two T-cell lines

**Subcellular location:**

[Isoform PDE7A1]: Cytoplasm, cytosol.

**Function:**

**Introduction:** **WB:** Western Blot **IP:** Immunoprecipitation **IHC:** Immunohistochemistry **ChIP:** Chromatin Immunoprecipitation **ICC/IF:** Immunocytochemistry/Immunofluorescence **F:** Flow Cytometry

**Cross Reactivity:** **H:** human **M:** mouse **R:** rat **Hm:** hamster **Mk:** monkey **Vir:** virus **Ml:** mink **C:** chicken **Dm** D. melanogaster **X:** Xenopus **Z:** zebrafish **B:** bovine  
**Dg:** dog **Pg:** pig **Hr:** horse

**For Research Use Only. Not For Use In Diagnostic Procedures.**

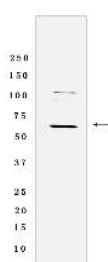
---

Hydrolyzes the second messenger cAMP, which is a key regulator of many important physiological processes (PubMed:8389765, PubMed:9195912, PubMed:19350606). May have a role in muscle signal transduction (PubMed:9195912)..

## Validation Data:

### PDE7A/HCP1 Rabbit mAb [94XJ] Images

---



Western blot (SDS PAGE) analysis of extracts from HuT78 cells lysates using PDE7A/HCP1 Rabbit mAb [94XJ] at dilution of 1:1000 incubated at 4°C over night

View more information on <http://naturebios.com>

**IMPORTANT:** For western blots, incubate membrane with diluted primary antibody in 1% w/v Milk, 1X TBST at 4°C overnight.