

**Carbonic Anhydrase 1 (CA2) Rabbit  
mAb[404E]**

**Cat NO. :A18370**

**Information:**

| Applications | Reactivity: | UniProt ID: | MW(kDa) | Host   | Isotype | Size             |
|--------------|-------------|-------------|---------|--------|---------|------------------|
| WB,IHC       | H,M,R       | P00918      | 29KDa   | Rabbit | IgG     | 50ul 100ul,200ul |

**Applications detail:**

| Application  | Dilution    |
|--|-------------|
| WB   | 1:1000-2000 |
| IHC  | 1:100       |
| The optimal dilutions should be determined by the end user |             |

**Conjugate:**

UnConjugate

**Form:**

Liquid

**sensitivity:**

Endogenous

**Purification:**

Protein A purification

**Specificity:**

Antibody is produced by immunizing animals with a synthetic peptide of human Carbonic Anhydrase 1 (CA2).

**Storage buffer and conditions:**

Antibody store in 10 mM PBS, 0.5mg/ml BSA, 50% glycerol (buffer) .

Shipped at 4°C. Store at -20°C or -80°C.

Products are valid for one natural year of receipt.Avoid repeated freeze / thaw cycles.

**Tissue specificity:**

**Subcellular location:**

Cytoplasm. Cell membrane.

**Function:**

Catalyzes the reversible hydration of carbon dioxide (PubMed:1909891, PubMed:1910042, PubMed:1336460, PubMed:8485129, PubMed:8399159, PubMed:8218160, PubMed:8262987, PubMed:8451242, PubMed:7901850, PubMed:7761440, PubMed:8639494, PubMed:9265618, PubMed:17330962, PubMed:9398308, PubMed:11327835, PubMed:12056894, PubMed:17346964, PubMed:12171926, PubMed:15453828, PubMed:16214338, PubMed:15865431, PubMed:16106378, PubMed:15300855, PubMed:15667203, PubMed:18942852, PubMed:11831900, PubMed:17251017). Can also hydrate cyanamide to urea (PubMed:10550681, PubMed:11015219). Stimulates the chloride-bicarbonate exchange activity of SLC26A6 (PubMed:15990874).

**Introduction:** **WB:** Western Blot **IP:** Immunoprecipitation **IHC:** Immunohistochemistry **ChIP:** Chromatin Immunoprecipitation **ICC/IF:** Immunocytochemistry/Immunofluorescence **F:** Flow Cytometry

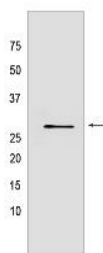
**Cross Reactivity:** **H:** human **M:** mouse **R:** rat **Hm:** hamster **Mk:** monkey **Vir:** virus **Ml:** mink **C:** chicken **Dm** D. melanogaster **X:** Xenopus **Z:** zebrafish **B:** bovine **Dg:** dog **Pg:** pig **Hr:** horse

**For Research Use Only. Not For Use In Diagnostic Procedures.**

Essential for bone resorption and osteoclast differentiation (PubMed:15300855). Involved in the regulation of fluid secretion into the anterior chamber of the eye. Contributes to intracellular pH regulation in the duodenal upper villous epithelium during proton-coupled peptide absorption..

## Validation Data:

### Carbonic Anhydrase 1 (CA2) Rabbit mAb[404E] Images



Western blot (SDS PAGE) analysis of extracts from 293T cells. Using Carbonic Anhydrase 1 (CA2) Rabbit mAb IgG [404E] at dilution of 1:1000 incubated at 4°C over night.

View more information on <http://naturebios.com>

**IMPORTANT:** For western blots, incubate membrane with diluted primary antibody in 1% w/v Milk, 1X TBST at 4°C overnight.