

**RNF185 + RNF5/NG2 Rabbit mAb [B4LT]**

**Cat NO. :A20148**

**Information:**

Applications	Reactivity:	UniProt ID:	MW(kDa)	Host	Isotype	Size
WB	H	Q96GF1	20 kda	Rabbit	IgG	100ul,200ul

**Applications detail:**

Application	Dilution
WB	1:1000-2000
The optimal dilutions should be determined by the end user	

**Conjugate:**

UnConjugate

**Form:**

Liquid

**sensitivity:**

Endogenous

**Purification:**

Protein A purification

**Specificity:**

Antibody is produced by immunizing animals with a synthetic peptide of Human RNF185 + RNF5/NG2.

**Storage buffer and conditions:**

Antibody store in 10 mM PBS, 0.5mg/ml BSA, 50% glycerol (buffer) .

Shipped at 4°C. Store at-20°C or -80°C.

Products are valid for one natural year of receipt.Avoid repeated freeze / thaw cycles.

**Tissue specificity:**

Ubiquitously expressed..

**Subcellular location:**

Mitochondrion outer membrane,Multi-pass membrane protein. Endoplasmic reticulum membrane,Multi-pass membrane protein.

**Function:**

**Introduction:** **WB:** Western Blot **IP:** Immunoprecipitation **IHC:** Immunohistochemistry **ChIP:** Chromatin Immunoprecipitation **ICC/IF:** Immunocytochemistry/Immunofluorescence **F:** Flow Cytometry

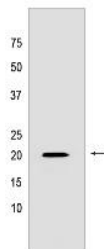
**Cross Reactivity:** **H:** human **M:** mouse **R:** rat **Hm:** hamster **Mk:** monkey **Vir:** virus **Ml:** mink **C:** chicken **Dm** D. melanogaster **X:** Xenopus **Z:** zebrafish **B:** bovine **Dg:** dog **Pg:** pig **Hr:** horse

**For Research Use Only. Not For Use In Diagnostic Procedures.**

E3 ubiquitin-protein ligase that regulates selective mitochondrial autophagy by mediating 'Lys-63'-linked polyubiquitination of BNIP1 (PubMed:21931693). Acts in the endoplasmic reticulum (ER)-associated degradation (ERAD) pathway, which targets misfolded proteins that accumulate in the endoplasmic reticulum (ER) for ubiquitination and subsequent proteasome-mediated degradation (PubMed:27485036). Protects cells from ER stress-induced apoptosis (PubMed:27485036). Responsible for the cotranslational ubiquitination and degradation of CFTR in the ERAD pathway (PubMed:24019521). Also acts as a regulator of the innate antiviral response by catalyzing 'Lys-27'-linked polyubiquitination of CGAS at 'Lys-173' and 'Lys-384', thereby promoting CGAS cyclic GMP-AMP synthase activity (PubMed:28273161). Preferentially associates with the E2 enzymes UBE2J1 and UBE2J2 (PubMed:24019521)..

## Validation Data:

### RNF185 + RNF5/NG2 Rabbit mAb [B4LT] Images



Western blot (SDS PAGE) analysis of extracts from HeLa cells lysates using RNF185 + RNF5/NG2 Rabbit mAb [B4LT] at dilution of 1:1000 incubated at 4°C over

View more information on <http://naturebios.com>

**IMPORTANT:** For western blots, incubate membrane with diluted primary antibody in 1% w/v Milk, 1X TBST at 4°C overnight.