

FAM96B Rabbit mAb [5VUY]

Cat NO. :A22472

Information:

Applications	Reactivity:	UniProt ID:	MW(kDa)	Host	Isotype	Size
WB	H	Q9Y3D0	18 kDa	Rabbit	IgG	100ul,200ul

Applications detail:

Application	Dilution
WB	1:1000-2000
The optimal dilutions should be determined by the end user	

Conjugate:

UnConjugate

Form:

Liquid

sensitivity:

Endogenous

Purification:

Protein A purification

Specificity:

Antibody is produced by immunizing animals with a synthetic peptide of Human FAM96B.

Storage buffer and conditions:

Antibody store in 10 mM PBS, 0.5mg/ml BSA, 50% glycerol (buffer) .

Shipped at 4°C. Store at -20°C or -80°C.

Products are valid for one natural year of receipt.Avoid repeated freeze / thaw cycles.

Tissue specificity:

Subcellular location:

Nucleus. Cytoplasm, cytoskeleton, spindle. Midbody.

Function:

Component of the cytosolic iron-sulfur protein assembly (CIA) complex, a multiprotein complex that mediates the incorporation of iron-sulfur cluster into extramitochondrial Fe/S proteins (PubMed:23891004, PubMed:22678362, PubMed:22678361, PubMed:29848660). As a CIA complex component and in collaboration with CIAO1 and MMS19, binds to and facilitates the assembly of most cytosolic-nuclear Fe/S proteins (PubMed:23891004, PubMed:29848660). As part of the mitotic spindle-associated MMXD complex it plays a role in chromosome segregation, probably by facilitating iron-sulfur cluster assembly into ERCC2/XPD (PubMed:20797633). Together with MMS19, facilitates the transfer of Fe-S clusters to the motor protein KIF4A,

Introduction: **WB:** Western Blot **IP:** Immunoprecipitation **IHC:** Immunohistochemistry **ChIP:** Chromatin Immunoprecipitation **ICC/IF:** Immunocytochemistry/Immunofluorescence **F:** Flow Cytometry

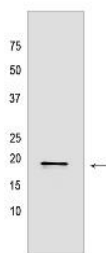
Cross Reactivity: **H:** human **M:** mouse **R:** rat **Hm:** hamster **Mk:** monkey **Vir:** virus **Ml:** mink **C:** chicken **Dm** D. melanogaster **X:** Xenopus **Z:** zebrafish **B:** bovine **Dg:** dog **Pg:** pig **Hr:** horse

For Research Use Only. Not For Use In Diagnostic Procedures.

which ensures proper localization of KIF4A to mitotic machinery components to promote the progression of mitosis (PubMed:29848660)..

Validation Data:

FAM96B Rabbit mAb [5VUY] Images



Western blot (SDS PAGE) analysis of extracts from HeLa cells lysates using FAM96B Rabbit mAb [5VUY] at dilution of 1:1000 incubated at 4°C overnight

View more information on <http://naturebios.com>

IMPORTANT: For western blots, incubate membrane with diluted primary antibody in 1% w/v Milk, 1X TBST at 4°C overnight.