

**METTL1 Rabbit mAb [OZ6A]**

**Cat NO. :A22960**

**Information:**

Applications	Reactivity:	UniProt ID:	MW(kDa)	Host	Isotype	Size
WB,IHC	H,M,R	Q9UBP6	31,28 kDa	Rabbit	IgG	100ul,200ul

**Applications detail:**

Application	Dilution
WB	1:1000-2000
IHC	1:100
The optimal dilutions should be determined by the end user	

**Conjugate:**

UnConjugate

**Form:**

Liquid

**sensitivity:**

Endogenous

**Purification:**

Protein A purification

**Specificity:**

Antibody is produced by immunizing animals with a synthetic peptide at the sequence of human METTL1

**Storage buffer and conditions:**

Antibody store in 10 mM PBS, 0.5mg/ml BSA, 50% glycerol (buffer) .

Shipped at 4°C. Store at -20°C or -80°C.

Products are valid for one natural year of receipt.Avoid repeated freeze / thaw cycles.

**Tissue specificity:**

Ubiquitous..

**Subcellular location:**

Nucleus.

**Function:**

Methyltransferase that mediates the formation of N(7)-methylguanine in a subset of RNA species, such as tRNAs, mRNAs and microRNAs (miRNAs) (PubMed:12403464, PubMed:31031084, PubMed:31031083). Catalyzes the formation of N(7)-methylguanine at position 46 (m7G46) in tRNA (PubMed:12403464, PubMed:31031084). Also acts as a methyltransferase for a subset of internal N(7)-methylguanine in mRNAs (PubMed:31031084). Internal N(7)-methylguanine methylation of mRNAs regulates translation (PubMed:31031084). Also methylates a specific subset of miRNAs, such as let-7 (PubMed:31031083). N(7)-methylguanine methylation of let-7 miRNA promotes let-7 miRNA processing by disrupting an inhibitory secondary structure within the primary miRNA transcript (pri-

**Introduction:** **WB:** Western Blot **IP:** Immunoprecipitation **IHC:** Immunohistochemistry **ChIP:** Chromatin Immunoprecipitation **ICC/IF:** Immunocytochemistry/Immunofluorescence **F:** Flow Cytometry

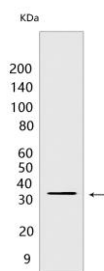
**Cross Reactivity:** **H:** human **M:** mouse **R:** rat **Hm:** hamster **Mk:** monkey **Vir:** virus **Ml:** mink **C:** chicken **Dm:** D. melanogaster **X:** Xenopus **Z:** zebrafish **B:** bovine **Dg:** dog **Pg:** pig **Hr:** horse

**For Research Use Only. Not For Use In Diagnostic Procedures.**

miRNA) (PubMed:31031083). Acts as a regulator of embryonic stem cell self-renewal and differentiation (By similarity)..

## Validation Data:

### METTL1 Rabbit mAb [OZ6A] Images



Western blot (SDS PAGE) analysis of extracts from HeLa cells. Using METTL1 Rabbit mAb [OZ6A] at dilution of 1:1000 incubated at 4°C over night.

View more information on <http://naturebios.com>

**IMPORTANT:** For western blots, incubate membrane with diluted primary antibody in 1% w/v Milk, 1X TBST at 4°C overnight.