

**Guanylyl Cyclase beta 1 (GUCY1B3) Rabbit mAb [VH76]**

**Cat NO. :A24241**

**Information:**

| Applications  | Reactivity: | UniProt ID: | MW(kDa) | Host   | Isotype | Size             |
|---------------|-------------|-------------|---------|--------|---------|------------------|
| WB,IHC,ICC/IF | H,M,R       | Q02153      | 71kDa   | Rabbit | IgG     | 50ul,100ul,200ul |

**Applications detail:**

| Application  | Dilution    |
|--|-------------|
| WB   | 1:1000-2000 |
| IHC  | 1:100       |
| ICC/IF   | 1:100       |
| The optimal dilutions should be determined by the end user |             |

**Conjugate:**

UnConjugate

**Form:**

Liquid

**sensitivity:**

Endogenous

**Purification:**

Protein A purification

**Specificity:**

Antibody is produced by immunizing animals with a synthetic peptide of human Guanylyl Cyclase beta 1 (GUCY1B3).

**Storage buffer and conditions:**

Antibody store in 10 mM PBS, 0.5mg/ml BSA, 50% glycerol (buffer) .

Shipped at 4°C. Store at-20°C or -80°C.

Products are valid for one natural year of receipt.Avoid repeated freeze / thaw cycles.

**Tissue specificity:**

Detected in brain cortex and cerebellum (at protein level)..

**Subcellular location:**

Cytoplasm.

**Function:**

Mediates responses to nitric oxide (NO) by catalyzing the biosynthesis of the signaling molecule cGMP..

**Introduction:** **WB:** Western Blot **IP:** Immunoprecipitation **IHC:** Immunohistochemistry **ChIP:** Chromatin Immunoprecipitation **ICC/IF:** Immunocytochemistry/Immunofluorescence **F:** Flow Cytometry

**Cross Reactivity:** **H:** human **M:** mouse **R:** rat **Hm:** hamster **Mk:** monkey **Vir:** virus **Ml:** mink **C:** chicken **Dm** D. melanogaster **X:** Xenopus **Z:** zebrafish **B:** bovine **Dg:** dog **Pg:** pig **Hr:** horse

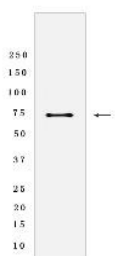
**For Research Use Only. Not For Use In Diagnostic Procedures.**

---

**Validation Data:**

**Guanylyl Cyclase beta 1 (GUCY1B3) Rabbit mAb [VH76] Images**

---



Western blot ( SDS PAGE ) analysis of extracts from  
Mouse liver Tissue lysate. Using Guanylyl Cyclase beta 1  
(GUCY1B3) Rabbit mAb [VH76] at dilution of 1:1000

View more information on <http://naturebios.com>

**IMPORTANT:** For western blots, incubate membrane with diluted primary antibody in 1% w/v Milk, 1X TBST at 4°C overnight.