

**Lysophospholipase 1/LPL-I Rabbit mAb  
[MQYD]**

**Cat NO. :A24581**

**Information:**

Applications	Reactivity:	UniProt ID:	MW(kDa)	Host	Isotype	Size
WB	H,M,R	O75608	25 kDa	Rabbit	IgG	50ul,100ul,200ul

**Applications detail:**

Application	Dilution
WB	1:1000-2000
The optimal dilutions should be determined by the end user	

**Conjugate:**

UnConjugate

**Form:**

Liquid

**sensitivity:**

Endogenous

**Purification:**

Protein A purification

**Specificity:**

Antibody is produced by immunizing animals with a synthetic peptide at the sequence of human Lysophospholipase 1/LPL-I

**Storage buffer and conditions:**

Antibody store in 10 mM PBS, 0.5mg/ml BSA, 50% glycerol (buffer) .

Shipped at 4°C. Store at-20°C or -80°C.

Products are valid for one natural year of receipt.Avoid repeated freeze / thaw cycles.

**Tissue specificity:**

Platelets..

**Subcellular location:**

Cytoplasm. Cell membrane. Nucleus membrane. Endoplasmic reticulum.

**Function:**

**Introduction:** **WB:** Western Blot **IP:** Immunoprecipitation **IHC:** Immunohistochemistry **ChIP:** Chromatin Immunoprecipitation **ICC/IF:** Immunocytochemistry/Immunofluorescence **F:** Flow Cytometry

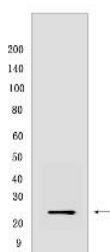
**Cross Reactivity:** **H:** human **M:** mouse **R:** rat **Hm:** hamster **Mk:** monkey **Vir:** virus **Ml:** mink **C:** chicken **Dm** D. melanogaster **X:** Xenopus **Z:** zebrafish **B:** bovine  
**Dg:** dog **Pg:** pig **Hr:** horse

**For Research Use Only. Not For Use In Diagnostic Procedures.**

Acts as a acyl-protein thioesterase (PubMed:19439193, PubMed:20418879). Hydrolyzes fatty acids from S-acylated cysteine residues in proteins such as trimeric G alpha proteins or HRAS (PubMed:20418879). Has depalmitoylating activity toward KCNMA1 (PubMed:22399288). Could also depalmitoylate ADRB2 (PubMed:27481942). Acts as a lysophospholipase and hydrolyzes lysophosphatidylcholine (lyso-PC) (PubMed:19439193). Also hydrolyzes lysophosphatidylethanolamine (lyso-PE), lysophosphatidylinositol (lyso-PI) and lysophosphatidylserine (lyso-PS) (By similarity). Has much higher thioesterase activity than lysophospholipase activity (PubMed:19439193). Contributes to the production of lysophosphatidic acid (LPA) during blood coagulation by recognizing and cleaving plasma phospholipids to generate lysophospholipids which in turn act as substrates for ENPP2 to produce LPA (PubMed:21393252)..

## Validation Data:

### Lysophospholipase 1/LPL-I Rabbit mAb [MQYD] Images



Western blot (SDS PAGE) analysis of extracts from HEK-293T cells .Using Lysophospholipase 1/LPL-I Rabbit mAb [MQYD] at dilution of 1:1000 incubated at 4°C over night.

View more information on <http://naturebios.com>

**IMPORTANT:** For western blots, incubate membrane with diluted primary antibody in 1% w/v Milk, 1X TBST at 4°C overnight.