

Exportin 4/XPO4 Rabbit mAb [97EM]

Cat NO. :A25884

Information:

Applications	Reactivity:	UniProt ID:	MW(kDa)	Host	Isotype	Size
WB	H,M,R	Q9C0E2	127 kDa	Rabbit	IgG	100ul,200ul

Applications detail:

Application	Dilution
WB	1:1000-2000
The optimal dilutions should be determined by the end user	

Conjugate:

UnConjugate

Form:

Liquid

sensitivity:

Endogenous

Purification:

Protein A purification

Specificity:

Antibody is produced by immunizing animals with a synthetic peptide of Human Exportin 4/XPO4.

Storage buffer and conditions:

Antibody store in 10 mM PBS, 0.5mg/ml BSA, 50% glycerol (buffer) .

Shipped at 4°C. Store at -20°C or -80°C.

Products are valid for one natural year of receipt.Avoid repeated freeze / thaw cycles.

Tissue specificity:

Subcellular location:

Cytoplasm. Nucleus.

Function:

Mediates the nuclear export of proteins (cargos), such as EIF5A, SMAD3 and isoform M2 of PKM (PKM2) (PubMed:10944119, PubMed:16449645, PubMed:26787900). In the nucleus binds cooperatively to its cargo and to the GTPase Ran in its active GTP-bound form. Docking of this trimeric complex to the nuclear pore complex (NPC) is mediated through binding to nucleoporins (PubMed:10944119, PubMed:16449645). Upon transit of a nuclear export complex into the cytoplasm, disassembling of the complex and hydrolysis of Ran-GTP to Ran-GDP (induced by RANBP1 and RANGAP1, respectively) cause release of the cargo from the export receptor (PubMed:10944119, PubMed:16449645). XPO4 then return to the nuclear compartment and mediate another

Introduction: **WB:** Western Blot **IP:** Immunoprecipitation **IHC:** Immunohistochemistry **ChIP:** Chromatin Immunoprecipitation **ICC/IF:** Immunocytochemistry/Immunofluorescence **F:** Flow Cytometry

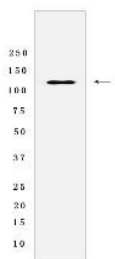
Cross Reactivity: **H:** human **M:** mouse **R:** rat **Hm:** hamster **Mk:** monkey **Vir:** virus **Ml:** mink **C:** chicken **Dm** D. melanogaster **X:** Xenopus **Z:** zebrafish **B:** bovine **Dg:** dog **Pg:** pig **Hr:** horse

For Research Use Only. Not For Use In Diagnostic Procedures.

round of transport (PubMed:10944119, PubMed:16449645). The directionality of nuclear export is thought to be conferred by an asymmetric distribution of the GTP- and GDP-bound forms of Ran between the cytoplasm and nucleus (PubMed:10944119, PubMed:16449645). Catalyzes the nuclear export of hypusinated EIF5A, a small cytoplasmic protein that enters nucleus and accumulates within nucleolus if not exported back by XPO4 (PubMed:10944119). Specifically mediates nuclear export of isoform M2 of PKM (PKM2) following PKM2 deacetylation by SIRT6 (PubMed:26787900). Also mediates the nuclear import of SOX transcription factors SRY and SOX2 (By similarity)..

Validation Data:

Exportin 4/XPO4 Rabbit mAb [97EM] Images



Western blot (SDS PAGE) analysis of extracts from Jurkat cells lysates using Exportin 4/XPO4 Rabbit mAb [97EM] at dilution of 1:1000 incubated at 4°C overnight

View more information on <http://naturebios.com>

IMPORTANT: For western blots, incubate membrane with diluted primary antibody in 1% w/v Milk, 1X TBST at 4°C overnight.