

DUSP12 Mouse mAb[BR2H]

Cat NO. :A26943

Information:

Applications	Reactivity:	UniProt ID:	MW(kDa)	Host	Isotype	Size
WB	H	Q9UNI6	43kDa	Mouse	IgG	50ul 100ul,200ul

Applications detail:

Application	Dilution
WB	1:1000-2000
The optimal dilutions should be determined by the end user	

Conjugate:

UnConjugate

Form:

Liquid

sensitivity:

Endogenous

Purification:

Protein A purification

Specificity:

Antibody is produced by immunizing animals with a synthetic peptide of human DUSP12.

Storage buffer and conditions:

Antibody store in 10 mM PBS, 0.5mg/ml BSA, 50% glycerol (buffer) .

Shipped at 4°C. Store at-20°C or -80°C.

Products are valid for one natural year of receipt.Avoid repeated freeze / thaw cycles.

Tissue specificity:

Ubiquitous, highest expression in spleen, testis, ovary, and peripheral blood leukocytes and lower expression in liver and lung.

Subcellular location:

Nucleus. Cytoplasm, cytosol.

Function:

Introduction: **WB:** Western Blot **IP:** Immunoprecipitation **IHC:** Immunohistochemistry **ChIP:** Chromatin Immunoprecipitation **ICC/IF:** Immunocytochemistry/Immunofluorescence **F:** Flow Cytometry

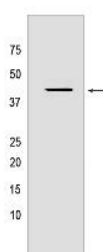
Cross Reactivity: **H:** human **M:** mouse **R:** rat **Hm:** hamster **Mk:** monkey **Vir:** virus **Ml:** mink **C:** chicken **Dm** D. melanogaster **X:** Xenopus **Z:** zebrafish **B:** bovine **Dg:** dog **Pg:** pig **Hr:** horse

For Research Use Only. Not For Use In Diagnostic Procedures.

Dual specificity phosphatase, can dephosphorylate both phosphotyrosine and phosphoserine or phosphothreonine residues. Can dephosphorylate glucokinase (in vitro) (By similarity). Has phosphatase activity with the synthetic substrate 6,8-difluoro-4-methylumbelliferyl phosphate and other in vitro substrates (PubMed:10446167, PubMed:24531476)..

Validation Data:

DUSP12 Mouse mAb[BR2H] Images



Western blot (SDS PAGE) analysis of extracts from HEK-293 cells. Using DUSP12 Mouse mAb IgG [BR2H] at dilution of 1:1000 incubated at 4°C over night.

View more information on <http://naturebios.com>

IMPORTANT: For western blots, incubate membrane with diluted primary antibody in 1% w/v Milk, 1X TBST at 4°C overnight.