

RNF128/GRAIL Rabbit mAb [V5U3]

Cat NO. :A29010

Information:

Applications	Reactivity:	UniProt ID:	MW(kDa)	Host	Isotype	Size
WB	H,M	Q8TEB7	47 kDa	Rabbit	IgG	100ul,200ul

Applications detail:

Application	Dilution
WB	1:1000-2000
The optimal dilutions should be determined by the end user	

Conjugate:

UnConjugate

Form:

Liquid

sensitivity:

Endogenous

Purification:

Protein A purification

Specificity:

Antibody is produced by immunizing animals with a synthetic peptide of Human RNF128/GRAIL.

Storage buffer and conditions:

Antibody store in 10 mM PBS, 0.5mg/ml BSA, 50% glycerol (buffer) .

Shipped at 4°C. Store at-20°C or -80°C.

Products are valid for one natural year of receipt.Avoid repeated freeze / thaw cycles.

Tissue specificity:

Subcellular location:

Endomembrane system,Single-pass membrane protein. Cytoplasm, cytoskeleton. Cytoplasm, perinuclear region.

Function:

E3 ubiquitin-protein ligase that catalyzes 'Lys-48'- and 'Lys-63'-linked polyubiquitin chains formation. Functions as an inhibitor of cytokine gene transcription. Inhibits IL2 and IL4 transcription, thereby playing an important role in the induction of the anergic phenotype, a long-term stable state of T-lymphocyte unresponsiveness to antigenic stimulation associated with the blockade of interleukin production. Ubiquitinates ARPC5 with 'Lys-48' linkages and COR1A with 'Lys-63' linkages leading to their degradation, down-regulation of these cytoskeletal components results in impaired lamellipodium formation and reduced accumulation of F-actin at the

Introduction: **WB:** Western Blot **IP:** Immunoprecipitation **IHC:** Immunohistochemistry **ChIP:** Chromatin Immunoprecipitation **ICC/IF:** Immunocytochemistry/Immunofluorescence **F:** Flow Cytometry

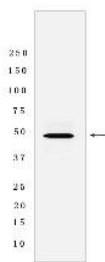
Cross Reactivity: **H:** human **M:** mouse **R:** rat **Hm:** hamster **Mk:** monkey **Vir:** virus **Ml:** mink **C:** chicken **Dm** D. melanogaster **X:** Xenopus **Z:** zebrafish **B:** bovine **Dg:** dog **Pg:** pig **Hr:** horse

For Research Use Only. Not For Use In Diagnostic Procedures.

immunological synapse. Functions in the patterning of the dorsal ectoderm, sensitizes ectoderm to respond to neural-inducing signals..

Validation Data:

RNF128/GRAIL Rabbit mAb [V5U3] Images



Western blot (SDS PAGE) analysis of extracts from HeLa cells lysates using RNF128/GRAIL Rabbit mAb [V5U3] at dilution of 1:1000 incubated at 4°C overnight

View more information on <http://naturebios.com>

IMPORTANT: For western blots, incubate membrane with diluted primary antibody in 1% w/v Milk, 1X TBST at 4°C overnight.