

Apolipoprotein C3 Rabbit mAb[MCT4]

Cat NO. :A35050

Information:

Applications	Reactivity:	UniProt ID:	MW(kDa)	Host	Isotype	Size
WB,IHC,ICC/IF	H,M,R	P02656	11kDa	Rabbit	IgG	50ul 100ul,200ul

Applications detail:

Application	Dilution
WB	1:1000-2000
IHC	1:100
ICC/IF	1:100
The optimal dilutions should be determined by the end user	

Conjugate:

UnConjugate

Form:

Liquid

sensitivity:

Endogenous

Purification:

Protein A purification

Specificity:

Antibody is produced by immunizing animals with a synthetic peptide of human Apolipoprotein C3.

Storage buffer and conditions:

Antibody store in 10 mM PBS, 0.5mg/ml BSA, 50% glycerol (buffer) .

Shipped at 4°C. Store at -20°C or -80°C.

Products are valid for one natural year of receipt.Avoid repeated freeze / thaw cycles.

Tissue specificity:

Liver..

Subcellular location:

Secreted.

Function:

Component of triglyceride-rich very low density lipoproteins (VLDL) and high density lipoproteins (HDL) in plasma (PubMed:18201179, PubMed:22510806). Plays a multifaceted role in triglyceride homeostasis (PubMed:18201179, PubMed:22510806). Intracellularly, promotes hepatic very low density lipoprotein 1 (VLDL1) assembly and secretion,extracellularly, attenuates hydrolysis and clearance of triglyceride-rich lipoproteins (TRLs) (PubMed:18201179, PubMed:22510806). Impairs the lipolysis of TRLs by inhibiting lipoprotein lipase and the hepatic uptake of TRLs by remnant receptors (PubMed:18201179, PubMed:22510806). Formed of several

Introduction: **WB:** Western Blot **IP:** Immunoprecipitation **IHC:** Immunohistochemistry **ChIP:** Chromatin Immunoprecipitation **ICC/IF:** Immunocytochemistry/Immunofluorescence **F:** Flow Cytometry

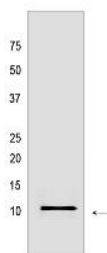
Cross Reactivity: **H:** human **M:** mouse **R:** rat **Hm:** hamster **Mk:** monkey **Vir:** virus **Ml:** mink **C:** chicken **Dm** D. melanogaster **X:** Xenopus **Z:** zebrafish **B:** bovine **Dg:** dog **Pg:** pig **Hr:** horse

For Research Use Only. Not For Use In Diagnostic Procedures.

curved helices connected via semiflexible hinges, so that it can wrap tightly around the curved micelle surface and easily adapt to the different diameters of its natural binding partners (PubMed:18408013)..

Validation Data:

Apolipoprotein C3 Rabbit mAb[MCT4] Images



Western blot (SDS PAGE) analysis of extracts from Human plasma tissue lysate. Using Apolipoprotein C3 Rabbit mAb IgG [MCT4] at dilution of 1:1000 incubated at

View more information on <http://naturebios.com>

IMPORTANT: For western blots, incubate membrane with diluted primary antibody in 1% w/v Milk, 1X TBST at 4°C overnight.