

RAB1B Mouse mAb[5890]

Cat NO. :A37347

Information:

Applications	Reactivity:	UniProt ID:	MW(kDa)	Host	Isotype	Size
WB,ICC/IF	H,M,R	Q9H0U4	22kDa	Mouse	IgG	50ul 100ul,200ul

Applications detail:

Application	Dilution
WB	1:1000-2000
ICC/IF	1:100
The optimal dilutions should be determined by the end user	

Conjugate:

UnConjugate

Form:

Liquid

sensitivity:

Endogenous

Purification:

Protein A purification

Specificity:

Antibody is produced by immunizing animals with a synthetic peptide of human RAB1B.

Storage buffer and conditions:

Antibody store in 10 mM PBS, 0.5mg/ml BSA, 50% glycerol (buffer) .

Shipped at 4°C. Store at-20°C or -80°C.

Products are valid for one natural year of receipt.Avoid repeated freeze / thaw cycles.

Tissue specificity:

Subcellular location:

Cytoplasm. Membrane,Lipid-anchor,Cytoplasmic side. Preautophagosomal structure membrane,Lipid-anchor,Cytoplasmic side. Cytoplasm, perinuclear region.

Function:

Introduction: **WB:** Western Blot **IP:** Immunoprecipitation **IHC:** Immunohistochemistry **ChIP:** Chromatin Immunoprecipitation **ICC/IF:** Immunocytochemistry/Immunofluorescence **F:** Flow Cytometry

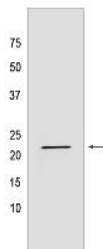
Cross Reactivity: **H:** human **M:** mouse **R:** rat **Hm:** hamster **Mk:** monkey **Vir:** virus **Ml:** mink **C:** chicken **Dm** D. melanogaster **X:** Xenopus **Z:** zebrafish **B:** bovine **Dg:** dog **Pg:** pig **Hr:** horse

For Research Use Only. Not For Use In Diagnostic Procedures.

The small GTPases Rab are key regulators of intracellular membrane trafficking, from the formation of transport vesicles to their fusion with membranes (PubMed:20545908, PubMed:9437002). Rabs cycle between an inactive GDP-bound form and an active GTP-bound form that is able to recruit to membranes different set of downstream effectors directly responsible for vesicle formation, movement, tethering and fusion (PubMed:9437002). Plays a role in the initial events of the autophagic vacuole development which take place at specialized regions of the endoplasmic reticulum (PubMed:20545908). Regulates vesicular transport between the endoplasmic reticulum and successive Golgi compartments (By similarity). Required to modulate the compacted morphology of the Golgi (PubMed:26209634). Promotes the recruitment of lipid phosphatase MTMR6 to the endoplasmic reticulum-Golgi intermediate compartment (By similarity)..

Validation Data:

RAB1B Mouse mAb[5890] Images



Western blot (SDS PAGE) analysis of extracts from HeLa cells. Using RAB1B Mouse mAb IgG [5890] at dilution of 1:1000 incubated at 4°C over night.

View more information on <http://naturebios.com>

IMPORTANT: For western blots, incubate membrane with diluted primary antibody in 1% w/v Milk, 1X TBST at 4°C overnight.