

**CENP-A Rabbit pAb**

**Cat NO. :A38164**

**Information:**

Applications	Reactivity:	UniProt ID:	MW(kDa)	Host	Isotype	Size
WB	H	P49450	17 kDa	Rabbit	IgG	100ul,200ul

**Applications detail:**

Application	Dilution
WB	1:1000-2000
The optimal dilutions should be determined by the end user	

**Conjugate:**

UnConjugate

**Form:**

Liquid

**sensitivity:**

Endogenous

**Purification:**

peptide affinity chromatography

**Specificity:**

Antibody is produced by immunizing animals with a synthetic peptide at the sequence of Human CENP-A

**Storage buffer and conditions:**

Antibody store in 10 mM PBS, 0.5mg/ml BSA, 50% glycerol (buffer) .

Shipped at 4°C. Store at -20°C or -80°C.

Products are valid for one natural year of receipt.Avoid repeated freeze / thaw cycles.

**Tissue specificity:**

**Subcellular location:**

Nucleus. Chromosome, centromere, kinetochore. Chromosome, centromere.

**Function:**

Histone H3-like nucleosomal protein that is specifically found in centromeric nucleosomes (PubMed:7962047, PubMed:9024683, PubMed:11756469, PubMed:14667408, PubMed:15702419, PubMed:15475964, PubMed:15282608, PubMed:17651496, PubMed:19114591, PubMed:27499292, PubMed:20739937). Replaces conventional H3 in the nucleosome core of centromeric chromatin at the inner plate of the kinetochore (PubMed:18072184). The presence of CENPA subtly modifies the nucleosome structure and the way DNA is wrapped around the nucleosome and gives rise to protruding DNA ends that are less well-ordered and rigid compared to nucleosomes containing histone H3 (PubMed:27499292, PubMed:26878239). May serve as an

**Introduction:** **WB:** Western Blot **IP:** Immunoprecipitation **IHC:** Immunohistochemistry **ChIP:** Chromatin Immunoprecipitation **ICC/IF:** Immunocytochemistry/Immunofluorescence **F:** Flow Cytometry

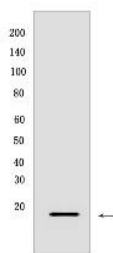
**Cross Reactivity:** **H:** human **M:** mouse **R:** rat **Hm:** hamster **Mk:** monkey **Vir:** virus **Ml:** mink **C:** chicken **Dm:** D. melanogaster **X:** Xenopus **Z:** zebrafish **B:** bovine **Dg:** dog **Pg:** pig **Hr:** horse

**For Research Use Only. Not For Use In Diagnostic Procedures.**

epigenetic mark that propagates centromere identity through replication and cell division (PubMed:15475964, PubMed:15282608, PubMed:26878239, PubMed:20739937, PubMed:21478274). Required for recruitment and assembly of kinetochore proteins, and as a consequence required for progress through mitosis, chromosome segregation and cytokinesis (PubMed:11756469, PubMed:14667408, PubMed:18072184, PubMed:23818633, PubMed:25556658, PubMed:27499292)..

## Validation Data:

### CENP-A Rabbit pAb Images



Western blot ( SDS PAGE ) analysis of extracts from HCT116 cells. Using CENP-A Rabbit pAb at dilution of 1:1000 incubated at 4°C over night.

View more information on <http://naturebios.com>

**IMPORTANT:** For western blots, incubate membrane with diluted primary antibody in 1% w/v Milk, 1X TBST at 4°C overnight.