

**Arfaptin-1 Rabbit mAb [BXRN]**

**Cat NO. :A41023**

**Information:**

Applications	Reactivity:	UniProt ID:	MW(kDa)	Host	Isotype	Size
WB	H,M,R	P53367	44 kda	Rabbit	IgG	100ul,200ul

**Applications detail:**

Application	Dilution
WB	1:1000-2000
The optimal dilutions should be determined by the end user	

**Conjugate:**

UnConjugate

**Form:**

Liquid

**sensitivity:**

Endogenous

**Purification:**

Protein A purification

**Specificity:**

Antibody is produced by immunizing animals with a synthetic peptide of Human Arfaptin-1.

**Storage buffer and conditions:**

Antibody store in 10 mM PBS, 0.5mg/ml BSA, 50% glycerol (buffer) .

Shipped at 4°C. Store at -20°C or -80°C.

Products are valid for one natural year of receipt.Avoid repeated freeze / thaw cycles.

**Tissue specificity:**

Ubiquitously expressed (PubMed:9038142). Higher levels in liver, pancreas, placenta, skeletal muscle and heart (PubMed:9038142)..

**Subcellular location:**

Golgi apparatus. Golgi apparatus, trans-Golgi network membrane.

**Function:**

**Introduction:** **WB:** Western Blot **IP:** Immunoprecipitation **IHC:** Immunohistochemistry **ChIP:** Chromatin Immunoprecipitation **ICC/IF:** Immunocytochemistry/Immunofluorescence **F:** Flow Cytometry

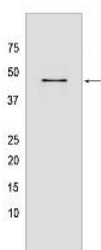
**Cross Reactivity:** **H:** human **M:** mouse **R:** rat **Hm:** hamster **Mk:** monkey **Vir:** virus **Ml:** mink **C:** chicken **Dm** D. melanogaster **X:** Xenopus **Z:** zebrafish **B:** bovine **Dg:** dog **Pg:** pig **Hr:** horse

**For Research Use Only. Not For Use In Diagnostic Procedures.**

Plays a role in controlling biogenesis of secretory granules at the trans-Golgi network (PubMed:22981988). Mechanistically, binds ARF-GTP at the neck of a growing secretory granule precursor and forms a protective scaffold (PubMed:9038142, PubMed:22981988). Once the granule precursor has been completely loaded, active PRKD1 phosphorylates ARFIP1 and releases it from ARFs (PubMed:22981988). In turn, ARFs induce fission (PubMed:22981988). Through this mechanism, ensures proper secretory granule formation at the Golgi of pancreatic beta cells (PubMed:22981988)..

## Validation Data:

### Arfaptin-1 Rabbit mAb [BXRN] Images



Western blot (SDS PAGE) analysis of extracts from HeLa cells lysates using Arfaptin-1 Rabbit mAb [BXRN] at dilution of 1:1000 incubated at 4°C over night

View more information on <http://naturebios.com>

**IMPORTANT:** For western blots, incubate membrane with diluted primary antibody in 1% w/v Milk, 1X TBST at 4°C overnight.