

**CENPA Rabbit mAb [YSK1]**

**Cat NO. :A41205**

**Information:**

| Applications | Reactivity: | UniProt ID: | MW(kDa) | Host   | Isotype | Size        |
|--------------|-------------|-------------|---------|--------|---------|-------------|
| WB,IHC       | H           | P49450      | 18 kDa  | Rabbit | IgG     | 100ul,200ul |

**Applications detail:**

| Application  | Dilution    |
|--|-------------|
| WB   | 1:1000-2000 |
| IHC  | 1:100,      |
| The optimal dilutions should be determined by the end user |             |

**Conjugate:**

UnConjugate

**Form:**

Liquid

**sensitivity:**

Endogenous

**Purification:**

Protein A purification

**Specificity:**

Antibody is produced by immunizing animals with a synthetic peptide of Human CENPA.

**Storage buffer and conditions:**

Antibody store in 10 mM PBS, 0.5mg/ml BSA, 50% glycerol (buffer) .

Shipped at 4°C. Store at -20°C or -80°C.

Products are valid for one natural year of receipt.Avoid repeated freeze / thaw cycles.

**Tissue specificity:**

**Subcellular location:**

Nucleus. Chromosome, centromere, kinetochore. Chromosome, centromere.

**Function:**

Histone H3-like nucleosomal protein that is specifically found in centromeric nucleosomes (PubMed:7962047, PubMed:9024683, PubMed:11756469, PubMed:14667408, PubMed:15702419, PubMed:15475964, PubMed:15282608, PubMed:17651496, PubMed:19114591, PubMed:27499292, PubMed:20739937). Replaces conventional H3 in the nucleosome core of centromeric chromatin at the inner plate of the kinetochore (PubMed:18072184). The presence of CENPA subtly modifies the nucleosome structure and the way DNA is wrapped around the nucleosome and gives rise to protruding DNA ends that are less well-ordered and rigid compared to nucleosomes containing histone H3 (PubMed:27499292, PubMed:26878239). May serve as an

**Introduction:** **WB:** Western Blot **IP:** Immunoprecipitation **IHC:** Immunohistochemistry **ChIP:** Chromatin Immunoprecipitation **ICC/IF:** Immunocytochemistry/Immunofluorescence **F:** Flow Cytometry

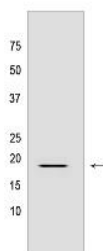
**Cross Reactivity:** **H:** human **M:** mouse **R:** rat **Hm:** hamster **Mk:** monkey **Vir:** virus **Ml:** mink **C:** chicken **Dm** D. melanogaster **X:** Xenopus **Z:** zebrafish **B:** bovine **Dg:** dog **Pg:** pig **Hr:** horse

**For Research Use Only. Not For Use In Diagnostic Procedures.**

epigenetic mark that propagates centromere identity through replication and cell division (PubMed:15475964, PubMed:15282608, PubMed:26878239, PubMed:20739937, PubMed:21478274). Required for recruitment and assembly of kinetochore proteins, and as a consequence required for progress through mitosis, chromosome segregation and cytokinesis (PubMed:11756469, PubMed:14667408, PubMed:18072184, PubMed:23818633, PubMed:25556658, PubMed:27499292)..

## Validation Data:

### CENPA Rabbit mAb [YSK1] Images



Western blot (SDS PAGE) analysis of extracts from HeLa cells lysates using CENPA Rabbit mAb [YSK1] at dilution of 1:1000 incubated at 4°C overnight

View more information on <http://naturebios.com>

**IMPORTANT:** For western blots, incubate membrane with diluted primary antibody in 1% w/v Milk, 1X TBST at 4°C overnight.