

SAR1B Rabbit mAb [0SHJ]

Cat NO. :A45403

Information:

Applications	Reactivity:	UniProt ID:	MW(kDa)	Host	Isotype	Size
WB,IHC,ICC/IF	H	Q9Y6B6	22 kDa	Rabbit	IgG	100ul,200ul

Applications detail:

Application	Dilution
WB	1:1000-2000
IHC	1:100
ICC/IF	1:100
The optimal dilutions should be determined by the end user	

Conjugate:

UnConjugate

Form:

Liquid

sensitivity:

Endogenous

Purification:

Protein A purification

Specificity:

Antibody is produced by immunizing animals with a synthetic peptide at the sequence of human SAR1B

Storage buffer and conditions:

Antibody store in 10 mM PBS, 0.5mg/ml BSA, 50% glycerol (buffer) .

Shipped at 4°C. Store at-20°C or -80°C.

Products are valid for one natural year of receipt.Avoid repeated freeze / thaw cycles.

Tissue specificity:

Expressed in many tissues including small intestine, liver, muscle and brain..

Subcellular location:

Endoplasmic reticulum membrane,Peripheral membrane protein. Golgi apparatus, Golgi stack membrane,Peripheral membrane protein.

Function:

Introduction: **WB:** Western Blot **IP:** Immunoprecipitation **IHC:** Immunohistochemistry **ChIP:** Chromatin Immunoprecipitation **ICC/IF:** Immunocytochemistry/Immunofluorescence **F:** Flow Cytometry

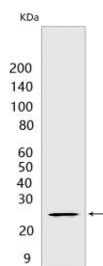
Cross Reactivity: **H:** human **M:** mouse **R:** rat **Hm:** hamster **Mk:** monkey **Vir:** virus **Ml:** mink **C:** chicken **Dm** D. melanogaster **X:** Xenopus **Z:** zebrafish **B:** bovine **Dg:** dog **Pg:** pig **Hr:** horse

For Research Use Only. Not For Use In Diagnostic Procedures.

GTP-binding protein involved in transport from the endoplasmic reticulum to the Golgi apparatus (By similarity). Activated by the guanine nucleotide exchange factor PREB (By similarity). Involved in the selection of the protein cargo and the assembly of the COPII coat complex (By similarity). Synergizes with the cargo receptor SURF4 to mediate the export of lipoproteins from the endoplasmic reticulum, thereby regulating lipoprotein delivery and the maintenance of lipid homeostasis (PubMed:33186557)..

Validation Data:

SAR1B Rabbit mAb [0SHJ] Images



Western blot (SDS PAGE) analysis of extracts from 293T cells. Using SAR1B Rabbit mAb [0SHJ] at dilution of 1:1000 incubated at 4°C over night.

View more information on <http://naturebios.com>

IMPORTANT: For western blots, incubate membrane with diluted primary antibody in 1% w/v Milk, 1X TBST at 4°C overnight.