

SIKE1 Rabbit mAb [D743]

Cat NO. :A46562

Information:

Applications	Reactivity:	UniProt ID:	MW(kDa)	Host	Isotype	Size
WB,IHC	H,M	Q9BRV8	24 kDa	Rabbit	IgG	50ul,100ul,200ul

Applications detail:

Application	Dilution
WB	1:1000-2000
IHC	1:100
The optimal dilutions should be determined by the end user	

Conjugate:

UnConjugate

Form:

Liquid

sensitivity:

Endogenous

Purification:

Protein A purification

Specificity:

Antibody is produced by immunizing animals with a synthetic peptide at the sequence of human SIKE1

Storage buffer and conditions:

Antibody store in 10 mM PBS, 0.5mg/ml BSA, 50% glycerol (buffer) .

Shipped at 4°C. Store at -20°C or -80°C.

Products are valid for one natural year of receipt.Avoid repeated freeze / thaw cycles.

Tissue specificity:

Widely expressed. Expressed in brain, heart, skeletal muscle, colon, thymus, spleen, kidney, liver, small intestine, placenta, lung and leukocytes. Present in all cell lines tested (at protein

Subcellular location:

Cytoplasm.

Function:

Introduction: **WB:** Western Blot **IP:** Immunoprecipitation **IHC:** Immunohistochemistry **ChIP:** Chromatin Immunoprecipitation **ICC/IF:** Immunocytochemistry/ Immunofluorescence **F:** Flow Cytometry

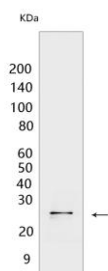
Cross Reactivity: **H:** human **M:** mouse **R:** rat **Hm:** hamster **Mk:** monkey **Vir:** virus **Ml:** mink **C:** chicken **Dm** D. melanogaster **X:** Xenopus **Z:** zebrafish **B:** bovine **Dg:** dog **Pg:** pig **Hr:** horse

For Research Use Only. Not For Use In Diagnostic Procedures.

Physiological suppressor of IKK-epsilon and TBK1 that plays an inhibitory role in virus- and TLR3-triggered IRF3. Inhibits TLR3-mediated activation of interferon-stimulated response elements (ISRE) and the IFN-beta promoter. May act by disrupting the interactions of IKBKE or TBK1 with TICAM1/TRIF, IRF3 and DDX58/RIG-I. Does not inhibit NF-kappa-B activation pathways..

Validation Data:

SIKE1 Rabbit mAb [D743] Images



Western blot (SDS PAGE) analysis of extracts from HeLa cells .Using SIKE1Rabbit mAb [D743] at dilution of 1:1000 incubated at 4°C over night.

View more information on <http://naturebios.com>

IMPORTANT: For western blots, incubate membrane with diluted primary antibody in 1% w/v Milk, 1X TBST at 4°C overnight.