

**Neutrophil Elastase (ELANE) Rabbit  
mAb[1LFQ]**

**Cat NO. :A46988**

**Information:**

Applications	Reactivity:	UniProt ID:	MW(kDa)	Host	Isotype	Size
WB,IHC,ICC/IF	H,M	P08246	30KDa	Rabbit	IgG	50ul 100ul,200ul

**Applications detail:**

Application	Dilution
WB	1:1000-2000
IHC	1:100
ICC/IF	1:100
The optimal dilutions should be determined by the end user	

**Conjugate:**

UnConjugate

**Form:**

Liquid

**sensitivity:**

Endogenous

**Purification:**

Protein A purification

**Specificity:**

Antibody is produced by immunizing animals with a synthetic peptide of human Neutrophil Elastase (ELANE).

**Storage buffer and conditions:**

Antibody store in 10 mM PBS, 0.5mg/ml BSA, 50% glycerol (buffer) .

Shipped at 4°C. Store at-20°C or -80°C.

Products are valid for one natural year of receipt.Avoid repeated freeze / thaw cycles.

**Tissue specificity:**

Bone marrow cells. Neutrophil (PubMed:10947984)..

**Subcellular location:**

Cytoplasmic vesicle, phagosome.

**Function:**

Modifies the functions of natural killer cells, monocytes and granulocytes. Inhibits C5a-dependent neutrophil enzyme release and chemotaxis (PubMed:15140022). Capable of killing E.coli but not S.aureus in vitro,digests outer membrane protein A (ompA) in E.coli and K.pneumoniae (PubMed:10947984)..

**Introduction:** **WB:** Western Blot **IP:** Immunoprecipitation **IHC:** Immunohistochemistry **ChIP:** Chromatin Immunoprecipitation **ICC/IF:** Immunocytochemistry/Immunofluorescence **F:** Flow Cytometry

**Cross Reactivity:** **H:** human **M:** mouse **R:** rat **Hm:** hamster **Mk:** monkey **Vir:** virus **Ml:** mink **C:** chicken **Dm** D. melanogaster **X:** Xenopus **Z:** zebrafish **B:** bovine **Dg:** dog **Pg:** pig **Hr:** horse

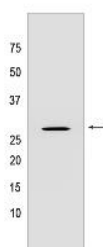
**For Research Use Only. Not For Use In Diagnostic Procedures.**

---

## Validation Data:

### Neutrophil Elastase (ELANE) Rabbit mAb[1LFQ] Images

---



Western blot (SDS PAGE) analysis of extracts from THP-1 cells. Using Neutrophil Elastase (ELANE) Rabbit mAb IgG [1LFQ] at dilution of 1:1000 incubated at 4°C over

View more information on <http://naturebios.com>

**IMPORTANT:** For western blots, incubate membrane with diluted primary antibody in 1% w/v Milk, 1X TBST at 4°C overnight.