

OTUD5 Rabbit mAb [7PR0]

Cat NO. :A47859

Information:

Applications	Reactivity:	UniProt ID:	MW(kDa)	Host	Isotype	Size
WB	H,R	Q96G74	75 kDa	Rabbit	IgG	100ul,200ul

Applications detail:

Application	Dilution
WB	1:1000-2000
The optimal dilutions should be determined by the end user	

Conjugate:

UnConjugate

Form:

Liquid

sensitivity:

Endogenous

Purification:

Protein A purification

Specificity:

Antibody is produced by immunizing animals with a synthetic peptide at the sequence of Human OTUD5

Storage buffer and conditions:

Antibody store in 10 mM PBS, 0.5mg/ml BSA, 50% glycerol (buffer) .

Shipped at 4°C. Store at -20°C or -80°C.

Products are valid for one natural year of receipt.Avoid repeated freeze / thaw cycles.

Tissue specificity:

Expressed in various tissues, including the liver and placenta, as well as in peripheral blood leukocytes..

Subcellular location:

Nucleus.

Function:

Deubiquitinating enzyme that functions as negative regulator of the innate immune system. Acts via TRAF3 deubiquitination and subsequent suppression of type I interferon (IFN) production. Has peptidase activity towards 'Lys-48'- and 'Lys-63'-linked polyubiquitin chains. Can also cleave 'Lys-11'-linked ubiquitin chains (in vitro). Controls neuroectodermal differentiation through cleaving 'Lys-48'-linked ubiquitin chains to counteract degradation of select chromatin regulators such as ARID1A, HDAC2 and HCF1 (PubMed:33523931)..

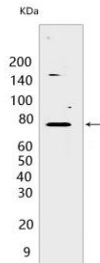
Introduction: **WB:** Western Blot **IP:** Immunoprecipitation **IHC:** Immunohistochemistry **ChIP:** Chromatin Immunoprecipitation **ICC/IF:** Immunocytochemistry/Immunofluorescence **F:** Flow Cytometry

Cross Reactivity: **H:** human **M:** mouse **R:** rat **Hm:** hamster **Mk:** monkey **Vir:** virus **Ml:** mink **C:** chicken **Dm** D. melanogaster **X:** Xenopus **Z:** zebrafish **B:** bovine **Dg:** dog **Pg:** pig **Hr:** horse

For Research Use Only. Not For Use In Diagnostic Procedures.

Validation Data:

OTUD5 Rabbit mAb [7PR0] Images



Western blot (SDS PAGE) analysis of extracts from 293T cells. Using OTUD5 Rabbit mAb [7PR0] at dilution of 1:1000 incubated at 4°C over night.

View more information on <http://naturebios.com>

IMPORTANT: For western blots, incubate membrane with diluted primary antibody in 1% w/v Milk, 1X TBST at 4°C overnight.