

GABA A Receptor gamma 2/GABRG2 Rabbit mAb [LYP9]

Cat NO. :A49048

Information:

Applications	Reactivity:	UniProt ID:	MW(kDa)	Host	Isotype	Size
WB,ICC/IF	H,M,R	P18507	54 kDa	Rabbit	IgG	100ul,200ul

Applications detail:

Application	Dilution
WB	1:1000-2000
ICC/IF	1:100
The optimal dilutions should be determined by the end user	

Conjugate:

UnConjugate

Form:

Liquid

sensitivity:

Endogenous

Purification:

Protein A purification

Specificity:

Antibody is produced by immunizing animals with a synthetic peptide at the sequence of human GABA A Receptor gamma 2/GABRG2

Storage buffer and conditions:

Antibody store in 10 mM PBS, 0.5mg/ml BSA, 50% glycerol (buffer) .

Shipped at 4°C. Store at-20°C or -80°C.

Products are valid for one natural year of receipt.Avoid repeated freeze / thaw cycles.

Tissue specificity:

Subcellular location:

Cell junction, synapse, postsynaptic cell membrane,Multi-pass membrane protein. Cell membrane,Multi-pass membrane protein. Cell projection, dendrite. Cytoplasmic vesicle membrane.

Function:

Introduction: **WB:** Western Blot **IP:** Immunoprecipitation **IHC:** Immunohistochemistry **ChIP:** Chromatin Immunoprecipitation **ICC/IF:** Immunocytochemistry/Immunofluorescence **F:** Flow Cytometry

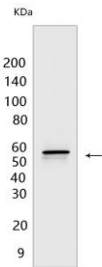
Cross Reactivity: **H:** human **M:** mouse **R:** rat **Hm:** hamster **Mk:** monkey **Vir:** virus **Ml:** mink **C:** chicken **Dm** D. melanogaster **X:** Xenopus **Z:** zebrafish **B:** bovine **Dg:** dog **Pg:** pig **Hr:** horse

For Research Use Only. Not For Use In Diagnostic Procedures.

Ligand-gated chloride channel which is a component of the heteropentameric receptor for GABA, the major inhibitory neurotransmitter in the brain (PubMed:2538761, PubMed:29950725). Plays an important role in the formation of functional inhibitory GABAergic synapses in addition to mediating synaptic inhibition as a GABA-gated ion channel (PubMed:23909897, PubMed:25489750, PubMed:27864268). The gamma2 subunit is necessary but not sufficient for a rapid formation of active synaptic contacts and the synaptogenic effect of this subunit is influenced by the type of alpha and beta subunits present in the receptor pentamer (By similarity). The alpha1/beta2/gamma2 receptor and the alpha1/beta3/gamma2 receptor exhibit synaptogenic activity (PubMed:23909897, PubMed:25489750). The alpha2/beta2/gamma2 receptor exhibits synaptogenic activity whereas the alpha2/beta3/gamma2 receptor shows very little or no synaptogenic activity (By similarity). Functions also as histamine receptor and mediates cellular responses to histamine (By similarity)..

Validation Data:

GABA A Receptor gamma 2/GABRG2 Rabbit mAb [LYP9] Images



Western blot (SDS PAGE) analysis of extracts from SH-SY5Y cells. Using GABA A Receptor gamma 2/GABRG2 Rabbit mAb [LYP9] at dilution of 1:1000

View more information on <http://naturebios.com>

IMPORTANT: For western blots, incubate membrane with diluted primary antibody in 1% w/v Milk, 1X TBST at 4°C overnight.