

UFSP2 Rabbit mAb [3G33]

Cat NO. :A52700

Information:

Applications	Reactivity:	UniProt ID:	MW(kDa)	Host	Isotype	Size
WB,IHC,ICC/IF	H,M,R	Q9NUQ7	53 kDa	Rabbit	IgG	100ul,200ul

Applications detail:

Application	Dilution
WB	1:1000-2000
IHC	1:100
ICC/IF	1:100
The optimal dilutions should be determined by the end user	

Conjugate:

UnConjugate

Form:

Liquid

sensitivity:

Endogenous

Purification:

Protein A purification

Specificity:

Antibody is produced by immunizing animals with a synthetic peptide at the sequence of human UFSP2

Storage buffer and conditions:

Antibody store in 10 mM PBS, 0.5mg/ml BSA, 50% glycerol (buffer) .

Shipped at 4°C. Store at -20°C or -80°C.

Products are valid for one natural year of receipt.Avoid repeated freeze / thaw cycles.

Tissue specificity:

Subcellular location:

Cytoplasm. Endoplasmic reticulum. Nucleus.

Function:

Thiol protease which recognizes and hydrolyzes the peptide bond at the C-terminal Gly of UFM1, a ubiquitin-like modifier protein bound to a number of target proteins (PubMed:25219498, PubMed:32160526). Does not hydrolyze SUMO1 or ISG15 ubiquitin-like proteins (PubMed:25219498). Through TRIP4 deufmylation may regulate intracellular nuclear receptors transactivation and thereby regulate cell proliferation and differentiation (PubMed:25219498)..

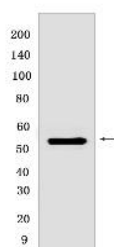
Introduction: **WB:** Western Blot **IP:** Immunoprecipitation **IHC:** Immunohistochemistry **ChIP:** Chromatin Immunoprecipitation **ICC/IF:** Immunocytochemistry/Immunofluorescence **F:** Flow Cytometry

Cross Reactivity: **H:** human **M:** mouse **R:** rat **Hm:** hamster **Mk:** monkey **Vir:** virus **Ml:** mink **C:** chicken **Dm** D. melanogaster **X:** Xenopus **Z:** zebrafish **B:** bovine **Dg:** dog **Pg:** pig **Hr:** horse

For Research Use Only. Not For Use In Diagnostic Procedures.

Validation Data:

UFSP2 Rabbit mAb [3G33] Images



Western blot (SDS PAGE) analysis of extracts from Human fetal kidney. Using UFSP2 Rabbit mAb [3G33] at dilution of 1:1000 incubated at 4°C over night.

View more information on <http://naturebios.com>

IMPORTANT: For western blots, incubate membrane with diluted primary antibody in 1% w/v Milk, 1X TBST at 4°C overnight.