

**NEK7 Rabbit mAb [2E8G]**

**Cat NO. :A52904**

**Information:**

Applications	Reactivity:	UniProt ID:	MW(kDa)	Host	Isotype	Size
WB	H,M,R	Q8TDX7	32 kDa	Rabbit	IgG	100ul,200ul

**Applications detail:**

Application	Dilution
WB	1:1000-2000
The optimal dilutions should be determined by the end user	

**Conjugate:**

UnConjugate

**Form:**

Liquid

**sensitivity:**

Endogenous

**Purification:**

Protein A purification

**Specificity:**

Antibody is produced by immunizing animals with a synthetic peptide at the sequence of human NEK7

**Storage buffer and conditions:**

Antibody store in 10 mM PBS, 0.5mg/ml BSA, 50% glycerol (buffer) .

Shipped at 4°C. Store at -20°C or -80°C.

Products are valid for one natural year of receipt.Avoid repeated freeze / thaw cycles.

**Tissue specificity:**

Highly expressed in lung, muscle, testis, brain, heart, liver, leukocyte and spleen. Lower expression in ovary, prostate and kidney. No expression seen in small intestine..

**Subcellular location:**

Nucleus. Cytoplasm. Cytoplasm, cytoskeleton, spindle pole. Cytoplasm, cytoskeleton, microtubule organizing center, centrosome.

**Function:**

**Introduction:** **WB:** Western Blot **IP:** Immunoprecipitation **IHC:** Immunohistochemistry **ChIP:** Chromatin Immunoprecipitation **ICC/IF:** Immunocytochemistry/Immunofluorescence **F:** Flow Cytometry

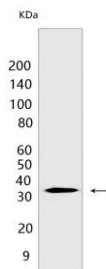
**Cross Reactivity:** **H:** human **M:** mouse **R:** rat **Hm:** hamster **Mk:** monkey **Vir:** virus **Ml:** mink **C:** chicken **Dm** D. melanogaster **X:** Xenopus **Z:** zebrafish **B:** bovine **Dg:** dog **Pg:** pig **Hr:** horse

**For Research Use Only. Not For Use In Diagnostic Procedures.**

Protein kinase which plays an important role in mitotic cell cycle progression (PubMed:17101132). Required for microtubule nucleation activity of the centrosome, robust mitotic spindle formation and cytokinesis (PubMed:17586473, PubMed:19414596). Phosphorylates RPS6KB1 (By similarity). Phosphorylates EML4 at 'Ser-146', promoting its dissociation from microtubules during mitosis which is required for efficient chromosome congression (PubMed:31409757). Essential protein for NLRP3 inflammasome assembly and activation that acts downstream stimuli such as K(+) efflux. Dispensable for the induction of core inflammasome components, but necessary for subsequent formation of the NLRP3:PYCARD complex, and activation of CASP1. Serves as a cellular switch that enforces mutual exclusivity of the inflammasome response and cell division. Exerts its effects on the NLRP3 inflammasome independently of its kinase activity (PubMed:26642356)..

## Validation Data:

### NEK7 Rabbit mAb [2E8G] Images



Western blot ( SDS PAGE ) analysis of extracts from Jurkat cells.Using NEK7Rabbit mAb [2E8G] at dilution of 1:1000 incubated at 4°C over night.

View more information on <http://naturebios.com>

**IMPORTANT:** For western blots, incubate membrane with diluted primary antibody in 1% w/v Milk, 1X TBST at 4°C overnight.