

ATG4B Rabbit mAb[6481]

Cat NO. :A53852

Information:

Applications	Reactivity:	UniProt ID:	MW(kDa)	Host	Isotype	Size
WB,ICC/IF	H,M,R	Q9Y4P1	48KDa	Rabbit	IgG	50ul 100ul,200ul

Applications detail:

Application	Dilution
WB	1:1000-2000
ICC/IF	1:100
The optimal dilutions should be determined by the end user	

Conjugate:

UnConjugate

Form:

Liquid

sensitivity:

Endogenous

Purification:

Protein A purification

Specificity:

Antibody is produced by immunizing animals with a synthetic peptide of human ATG4B.

Storage buffer and conditions:

Antibody store in 10 mM PBS, 0.5mg/ml BSA, 50% glycerol (buffer) .

Shipped at 4°C. Store at -20°C or -80°C.

Products are valid for one natural year of receipt.Avoid repeated freeze / thaw cycles.

Tissue specificity:

Subcellular location:

Cytoplasm. Cytoplasm, cytosol. Cytoplasmic vesicle, autophagosome. Endoplasmic reticulum. Mitochondrion.

Function:

Cysteine protease that plays a key role in autophagy by mediating both proteolytic activation and delipidation of ATG8 family proteins (PubMed:15169837, PubMed:15187094, PubMed:17347651, PubMed:19322194, PubMed:21177865, PubMed:26378241, PubMed:29232556, PubMed:28821708, PubMed:30443548, PubMed:30661429, PubMed:22302004, PubMed:27527864, PubMed:28633005, PubMed:30076329). Required for canonical autophagy (macroautophagy), non-canonical autophagy as well as for mitophagy (PubMed:33773106, PubMed:33909989). The protease activity is required for proteolytic activation of ATG8 family proteins: cleaves the C-terminal amino acid of ATG8 proteins MAP1LC3A, MAP1LC3B, MAP1LC3C, GABARAPL1, GABARAPL2 and

Introduction: **WB:** Western Blot **IP:** Immunoprecipitation **IHC:** Immunohistochemistry **ChIP:** Chromatin Immunoprecipitation **ICC/IF:** Immunocytochemistry/Immunofluorescence **F:** Flow Cytometry

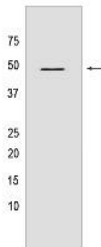
Cross Reactivity: **H:** human **M:** mouse **R:** rat **Hm:** hamster **Mk:** monkey **Vir:** virus **Ml:** mink **C:** chicken **Dm:** D. melanogaster **X:** Xenopus **Z:** zebrafish **B:** bovine **Dg:** dog **Pg:** pig **Hr:** horse

For Research Use Only. Not For Use In Diagnostic Procedures.

GABARAP, to reveal a C-terminal glycine (PubMed:15169837, PubMed:15187094, PubMed:17347651, PubMed:20818167, PubMed:19322194, PubMed:21177865, PubMed:22302004, PubMed:27527864, PubMed:28633005, PubMed:29458288, PubMed:30661429, PubMed:28287329). Exposure of the glycine at the C-terminus is essential for ATG8 proteins conjugation to phosphatidylethanolamine (PE) and insertion to membranes, which is necessary for autophagy (PubMed:15169837, PubMed:15187094, PubMed:17347651, PubMed:19322194, PubMed:21177865, PubMed:22302004). Protease activity is also required to counteract formation of high-molecular weight conjugates of ATG8 proteins (ATG8ylation): acts as a deubiquitinating-like enzyme that removes ATG8 conjugated to other proteins, such as ATG3 (PubMed:31315929, PubMed:33773106). In addition to the protease activity, also mediates delipidation of ATG8 family proteins (PubMed:15187094, PubMed:28633005, PubMed:29458288, PubMed:32686895, PubMed:33909989, PubMed:19322194). Catalyzes delipidation of PE-conjugated forms of ATG8 proteins during macroautophagy (PubMed:15187094, PubMed:29458288, PubMed:32686895, PubMed:33909989, PubMed:19322194). Also involved in non-canonical autophagy, a parallel pathway involving conjugation of ATG8 proteins to single membranes at endolysosomal compartments, by catalyzing delipidation of ATG8 proteins conjugated to phosphatidylserine (PS) (PubMed:33909989). Compared to other members of the family (ATG4A, ATG4C or ATG4C), constitutes the major protein for proteolytic activation of ATG8 proteins, while it displays weaker delipidation activity than other ATG4 paralogs (PubMed:29458288, PubMed:30661429). Involved in phagophore growth during mitophagy independently of its protease activity and of ATG8 proteins: acts by regulating ATG9A trafficking to mitochondria and promoting phagophore-endoplasmic reticulum contacts during the lipid transfer phase of mitophagy (PubMed:33773106)..

Validation Data:

ATG4B Rabbit mAb[6481] Images



Western blot (SDS PAGE) analysis of extracts from HepG2 cells. Using ATG4B Rabbit mAb IgG [6481] at dilution of 1:1000 incubated at 4°C over night.

View more information on <http://naturebios.com>

IMPORTANT: For western blots, incubate membrane with diluted primary antibody in 1% w/v Milk, 1X TBST at 4°C overnight.