

**MLLT11 Rabbit mAb [04ZO]**

**Cat NO. :A54719**

**Information:**

Applications	Reactivity:	UniProt ID:	MW(kDa)	Host	Isotype	Size
WB,IHC	H	Q13015	10 kDa	Rabbit	IgG	100ul,200ul

**Applications detail:**

Application	Dilution
WB	1:1000-2000
IHC	1:100,
The optimal dilutions should be determined by the end user	

**Conjugate:**

UnConjugate

**Form:**

Liquid

**sensitivity:**

Endogenous

**Purification:**

Protein A purification

**Specificity:**

Antibody is produced by immunizing animals with a synthetic peptide of Human MLLT11.

**Storage buffer and conditions:**

Antibody store in 10 mM PBS, 0.5mg/ml BSA, 50% glycerol (buffer) .

Shipped at 4°C. Store at -20°C or -80°C.

Products are valid for one natural year of receipt.Avoid repeated freeze / thaw cycles.

**Tissue specificity:**

Expressed in myoepithelial cells of normal breast tissue (at protein level) (PubMed:26079538). Highly expressed in thymus (PubMed:7833468). Expressed in colon, small intestine, prostate and ovary.

**Subcellular location:**

Nucleus. Cytoplasm. Cytoplasm, cytoskeleton, microtubule organizing center, centrosome.

**Function:**

**Introduction:** **WB:** Western Blot **IP:** Immunoprecipitation **IHC:** Immunohistochemistry **ChIP:** Chromatin Immunoprecipitation **ICC/IF:** Immunocytochemistry/Immunofluorescence **F:** Flow Cytometry

**Cross Reactivity:** **H:** human **M:** mouse **R:** rat **Hm:** hamster **Mk:** monkey **Vir:** virus **Ml:** mink **C:** chicken **Dm** D. melanogaster **X:** Xenopus **Z:** zebrafish **B:** bovine **Dg:** dog **Pg:** pig **Hr:** horse

**For Research Use Only. Not For Use In Diagnostic Procedures.**

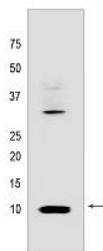
---

Cofactor for the transcription factor TCF7 (PubMed:26079538). Involved in regulation of lymphoid development by driving multipotent hematopoietic progenitor cells towards a T cell fate (PubMed:21715312)..

## Validation Data:

### MLLT11 Rabbit mAb [04ZO] Images

---



Western blot (SDS PAGE) analysis of extracts from Jurkat cells lysates.using MLLT11 Rabbit mAb [04ZO] at dilution of 1:1000 incubated at 4°C over night

View more information on <http://naturebios.com>

**IMPORTANT:** For western blots, incubate membrane with diluted primary antibody in 1% w/v Milk, 1X TBST at 4°C overnight.