

**USP25 Rabbit mAb [8143]**

**Cat NO. :A59063**

**Information:**

Applications	Reactivity:	UniProt ID:	MW(kDa)	Host	Isotype	Size
WB	H,M,R	Q9UHP3	122 kDa	Rabbit	IgG	100ul,200ul

**Applications detail:**

Application	Dilution
WB	1:1000-2000
The optimal dilutions should be determined by the end user	

**Conjugate:**

UnConjugate

**Form:**

Liquid

**sensitivity:**

Endogenous

**Purification:**

Protein A purification

**Specificity:**

Antibody is produced by immunizing animals with a synthetic peptide of Human USP25.

**Storage buffer and conditions:**

Antibody store in 10 mM PBS, 0.5mg/ml BSA, 50% glycerol (buffer) .

Shipped at 4°C. Store at -20°C or -80°C.

Products are valid for one natural year of receipt.Avoid repeated freeze / thaw cycles.

**Tissue specificity:**

Isoform USP25a is found in most adult and fetal tissues,expression is moderately high in testis, pancreas, kidney, skeletal muscle, liver, lung, placenta, brain, heart, but very low in peripheral

**Subcellular location:**

Cytoplasm.,[Isoform USP25m]: Cytoplasm. Nucleus.

**Function:**

**Introduction:** **WB:** Western Blot **IP:** Immunoprecipitation **IHC:** Immunohistochemistry **ChIP:** Chromatin Immunoprecipitation **ICC/IF:** Immunocytochemistry/Immunofluorescence **F:** Flow Cytometry

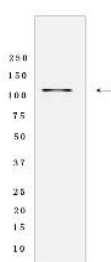
**Cross Reactivity:** **H:** human **M:** mouse **R:** rat **Hm:** hamster **Mk:** monkey **Vir:** virus **Ml:** mink **C:** chicken **Dm** D. melanogaster **X:** Xenopus **Z:** zebrafish **B:** bovine **Dg:** dog **Pg:** pig **Hr:** horse

**For Research Use Only. Not For Use In Diagnostic Procedures.**

Deubiquitinating enzyme that hydrolyzes ubiquitin moieties conjugated to substrates and thus, functions to process newly synthesized Ubiquitin, to recycle ubiquitin molecules or to edit polyubiquitin chains and prevents proteasomal degradation of substrates. Hydrolyzes both 'Lys-48'- and 'Lys-63'-linked tetraubiquitin chains., The muscle-specific isoform (USP25m) may have a role in the regulation of muscular differentiation and function.

## Validation Data:

### USP25 Rabbit mAb [8143] Images



Western blot (SDS PAGE) analysis of extracts from 293 cells lysates using USP25 Rabbit mAb [8143] at dilution of 1:1000 incubated at 4°C overnight

View more information on <http://naturebios.com>

**IMPORTANT:** For western blots, incubate membrane with diluted primary antibody in 1% w/v Milk, 1X TBST at 4°C overnight.