

**YME1L1 Mouse mAb[KC32]**

**Cat NO. :A60405**

**Information:**

Applications	Reactivity:	UniProt ID:	MW(kDa)	Host	Isotype	Size
WB,IHC	H,M,R	Q96TA2	63kDa	Mouse	IgG	100ul,200ul

**Applications detail:**

Application	Dilution
WB	1:1000-2000
IHC	1:100
The optimal dilutions should be determined by the end user	

**Conjugate:**

UnConjugate

**Form:**

Liquid

**sensitivity:**

Endogenous

**Purification:**

Protein A purification

**Specificity:**

Antibody is produced by immunizing animals with a synthetic peptide of human YME1L1.

**Storage buffer and conditions:**

Antibody store in 10 mM PBS, 0.5mg/ml BSA, 50% glycerol (buffer) .

Shipped at 4°C. Store at -20°C or -80°C.

Products are valid for one natural year of receipt.Avoid repeated freeze / thaw cycles.

**Tissue specificity:**

High expression in cardiac and skeletal muscle mitochondria..

**Subcellular location:**

Mitochondrion inner membrane. Mitochondrion.

**Function:**

ATP-dependent metalloprotease that catalyzes the degradation of folded and unfolded proteins with a suitable degron sequence in the mitochondrial intermembrane region (PubMed:26923599, PubMed:27786171). Plays an important role in regulating mitochondrial morphology and function by cleaving OPA1 at position S2, giving rise to a form of OPA1 that promotes maintenance of normal mitochondrial structure and mitochondrial protein metabolism (PubMed:18076378, PubMed:26923599, PubMed:27495975). Ensures cell proliferation, maintains normal cristae morphology and complex I respiration activity, promotes antiapoptotic activity and protects mitochondria from the accumulation of oxidatively damaged membrane proteins (PubMed:22262461). Required

**Introduction:** **WB:** Western Blot **IP:** Immunoprecipitation **IHC:** Immunohistochemistry **ChIP:** Chromatin Immunoprecipitation **ICC/IF:** Immunocytochemistry/Immunofluorescence **F:** Flow Cytometry

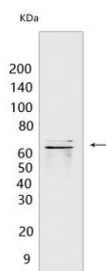
**Cross Reactivity:** **H:** human **M:** mouse **R:** rat **Hm:** hamster **Mk:** monkey **Vir:** virus **Ml:** mink **C:** chicken **Dm:** D. melanogaster **X:** Xenopus **Z:** zebrafish **B:** bovine **Dg:** dog **Pg:** pig **Hr:** horse

**For Research Use Only. Not For Use In Diagnostic Procedures.**

for normal, constitutive degradation of PRELID1 (PubMed:27495975). Catalyzes the degradation of OMA1 in response to membrane depolarization (PubMed:26923599). Required to control the accumulation of nonassembled respiratory chain subunits (NDUFB6, OX4 and ND1) (PubMed:22262461)..

## Validation Data:

### YME1L1 Mouse mAb[KC32] Images



Western blot (SDS PAGE) analysis of extracts from A549 cells. Using YME1L1 Mouse mAb IgG [KC32] at dilution of 1:1000 incubated at 4°C over night.

View more information on <http://naturebios.com>

**IMPORTANT:** For western blots, incubate membrane with diluted primary antibody in 1% w/v Milk, 1X TBST at 4°C overnight.