

HSPB11 Mouse mAb[VD0M]

Cat NO. :A61123

Information:

Applications	Reactivity:	UniProt ID:	MW(kDa)	Host	Isotype	Size
WB	H	Q9Y547	20kDa	Mouse	IgG	50ul 100ul,200ul

Applications detail:

Application	Dilution
WB	1:1000-2000
The optimal dilutions should be determined by the end user	

Conjugate:

UnConjugate

Form:

Liquid

sensitivity:

Endogenous

Purification:

Protein A purification

Specificity:

Antibody is produced by immunizing animals with a synthetic peptide of human HSPB11.

Storage buffer and conditions:

Antibody store in 10 mM PBS, 0.5mg/ml BSA, 50% glycerol (buffer) .

Shipped at 4°C. Store at -20°C or -80°C.

Products are valid for one natural year of receipt.Avoid repeated freeze / thaw cycles.

Tissue specificity:

Detected in placenta..

Subcellular location:

Cell projection, cilium.

Function:

Component of the IFT complex B required for sonic hedgehog/SHH signaling. May mediate transport of SHH components: required for the export of SMO and PTCH1 receptors out of the cilium and the accumulation of GLI2 at the ciliary tip in response to activation of the SHH pathway, suggesting it is involved in the dynamic transport of SHH signaling molecules within the cilium. Not required for ciliary assembly. Its role in intraflagellar transport is mainly seen in tissues rich in ciliated cells such as kidney and testis. Essential for male fertility, spermiogenesis and sperm flagella formation. Plays a role in the early development of the kidney. May be involved in the regulation of ureteric bud initiation (By similarity)..

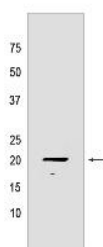
Introduction: **WB:** Western Blot **IP:** Immunoprecipitation **IHC:** Immunohistochemistry **ChIP:** Chromatin Immunoprecipitation **ICC/IF:** Immunocytochemistry/Immunofluorescence **F:** Flow Cytometry

Cross Reactivity: **H:** human **M:** mouse **R:** rat **Hm:** hamster **Mk:** monkey **Vir:** virus **Ml:** mink **C:** chicken **Dm** D. melanogaster **X:** Xenopus **Z:** zebrafish **B:** bovine **Dg:** dog **Pg:** pig **Hr:** horse

For Research Use Only. Not For Use In Diagnostic Procedures.

Validation Data:

HSPB11 Mouse mAb[VD0M] Images



Western blot (SDS PAGE) analysis of extracts from NCCIT cells. Using HSPB11 Mouse mAb IgG [VD0M] at dilution of 1:1000 incubated at 4°C over night.

View more information on <http://naturebios.com>

IMPORTANT: For western blots, incubate membrane with diluted primary antibody in 1% w/v Milk, 1X TBST at 4°C overnight.