

ANTXR2/CMG-2 Rabbit mAb [5OY1]

Cat NO. :A61499

Information:

Applications	Reactivity:	UniProt ID:	MW(kDa)	Host	Isotype	Size
WB,IHC,ICC/IF	H	P58335	55 kDa	Rabbit	IgG	100ul,200ul

Applications detail:

Application	Dilution
WB	1:1000-2000
IHC	1:100,
ICC/IF	1:100,
The optimal dilutions should be determined by the end user	

Conjugate:

UnConjugate

Form:

Liquid

sensitivity:

Endogenous

Purification:

Protein A purification

Specificity:

Antibody is produced by immunizing animals with a synthetic peptide of Human ANTXR2/CMG-2.

Storage buffer and conditions:

Antibody store in 10 mM PBS, 0.5mg/ml BSA, 50% glycerol (buffer) .

Shipped at 4°C. Store at -20°C or -80°C.

Products are valid for one natural year of receipt.Avoid repeated freeze / thaw cycles.

Tissue specificity:

Expressed in prostate, thymus, ovary, testis, pancreas, colon, heart, kidney, lung, liver, peripheral blood leukocytes, placenta, skeletal muscle, small intestine and spleen..

Subcellular location:

[Isoform 1]: Cell membrane,Single-pass type I membrane protein.

Function:

Introduction: **WB:** Western Blot **IP:** Immunoprecipitation **IHC:** Immunohistochemistry **ChIP:** Chromatin Immunoprecipitation **ICC/IF:** Immunocytochemistry/Immunofluorescence **F:** Flow Cytometry

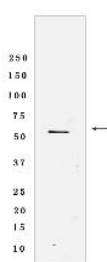
Cross Reactivity: **H:** human **M:** mouse **R:** rat **Hm:** hamster **Mk:** monkey **Vir:** virus **Ml:** mink **C:** chicken **Dm** D. melanogaster **X:** Xenopus **Z:** zebrafish **B:** bovine **Dg:** dog **Pg:** pig **Hr:** horse

For Research Use Only. Not For Use In Diagnostic Procedures.

Necessary for cellular interactions with laminin and the extracellular matrix... (Microbial infection) Receptor for the protective antigen (PA) of B.anthraxis (PubMed:12700348, PubMed:15243628, PubMed:15326297). Binding of PA leads to heptamerization of the receptor-PA complex (PubMed:12700348, PubMed:15243628, PubMed:15326297). Upon binding of the PA of B.anthraxis, the complex moves to glycosphingolipid-rich lipid rafts, where it is internalized via a clathrin-dependent pathway (PubMed:12551953, PubMed:15337774). In the endosomal membrane, at pH under 7, the complex then rearranges and forms a pore allowing the other components of anthrax toxin to escape to the cytoplasm (PubMed:12551953, PubMed:15337774)..

Validation Data:

ANTXR2/CMG-2 Rabbit mAb [5OY1] Images



Western blot (SDS PAGE) analysis of extracts from Human fetal heart tissue lyaste.using ANTXR2/CMG-2 Rabbit mAb [5OY1] at dilution of 1:1000 incubated at

View more information on <http://naturebios.com>

IMPORTANT: For western blots, incubate membrane with diluted primary antibody in 1% w/v Milk, 1X TBST at 4°C overnight.