

PPCEL/PREPL Rabbit mAb [4K9R]

Cat NO. :A65014

Information:

Applications	Reactivity:	UniProt ID:	MW(kDa)	Host	Isotype	Size
WB,IHC,ICC/IF	H,M,R	Q4J6C6	72 kDa	Rabbit	IgG	100ul,200ul

Applications detail:

Application	Dilution
WB	1:1000-2000
IHC	1:100
ICC/IF	1:100
The optimal dilutions should be determined by the end user	

Conjugate:

UnConjugate

Form:

Liquid

sensitivity:

Endogenous

Purification:

Protein A purification

Specificity:

Antibody is produced by immunizing animals with a synthetic peptide at the sequence of human PPCEL/PREPL

Storage buffer and conditions :

Antibody store in 10 mM PBS, 0.5mg/ml BSA, 50% glycerol (buffer) .

Shipped at 4°C. Store at -20°C or -80°C.

Products are valid for one natural year of receipt.Avoid repeated freeze / thaw cycles.

Tissue specificity:

Expressed in pyramidal neurons of the temporal cortex and neocortex (at protein level) (PubMed:23485813).

Widely expressed (PubMed:15913950, PubMed:16385448). Expressed at higher level in brain,

Subcellular location:

Cytoplasm, cytosol. Golgi apparatus, trans-Golgi network. Cytoplasm, cytoskeleton. Golgi apparatus. Nucleus.

Function:

Introduction: **WB:** Western Blot **IP:** Immunoprecipitation **IHC:** Immunohistochemistry **ChIP:** Chromatin Immunoprecipitation **ICC/IF:** Immunocytochemistry/Immunofluorescence **F:** Flow Cytometry

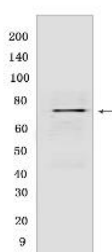
Cross Reactivity: **H:** human **M:** mouse **R:** rat **Hm:** hamster **Mk:** monkey **Vir:** virus **Ml:** mink **C:** chicken **Dm** D. melanogaster **X:** Xenopus **Z:** zebrafish **B:** bovine
Dg: dog **Pg:** pig **Hr:** horse

For Research Use Only. Not For Use In Diagnostic Procedures.

Serine peptidase whose precise substrate specificity remains unclear (PubMed:16143824, PubMed:16385448, PubMed:28726805). Does not cleave peptides after a arginine or lysine residue (PubMed:16143824). Regulates trans-Golgi network morphology and sorting by regulating the membrane binding of the AP-1 complex (PubMed:23321636). May play a role in the regulation of synaptic vesicle exocytosis (PubMed:24610330)..

Validation Data:

PPCEL/PREPL Rabbit mAb [4K9R] Images



Western blot (SDS PAGE) analysis of extracts from Human fetal brain. Using PPCEL/PREPL Rabbit mAb [4K9R] at dilution of 1:1000 incubated at 4°C over night.

View more information on <http://naturebios.com>

IMPORTANT: For western blots, incubate membrane with diluted primary antibody in 1% w/v Milk, 1X TBST at 4°C overnight.